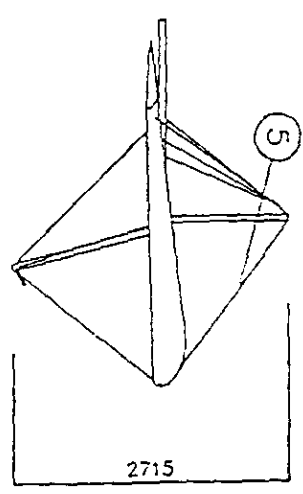
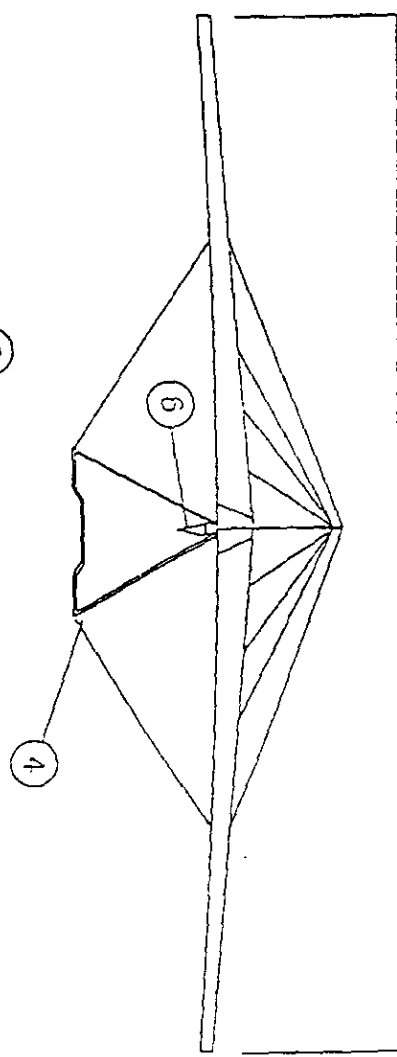




RUMOUR 3 13 Parts Catalogue

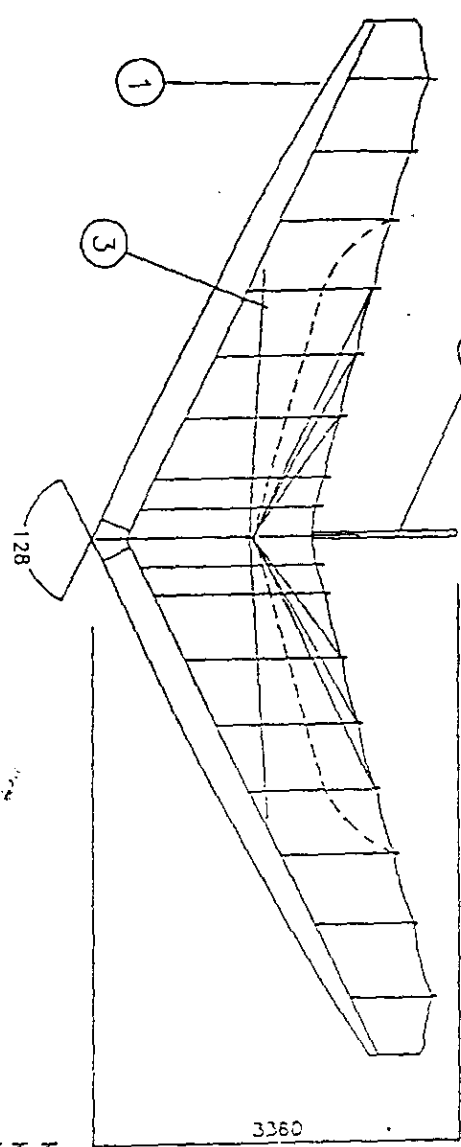
Cyclone Airports Ltd trading as Pegasus Aviation
Elm Tree Park, Manton, Marlborough, Wiltshire. UK
Telephone +44 (0) 1672 861578 Fax +44 (0) 1672 861550
www.pegasusaviation.co.uk email - parts@pegasusaviation.co.uk

9600



0 1000 2000 3000 4000 5000

Drawing No. SW-89115



RUMOUR THREE 13M (VB on)
SHEET 1 OF 4

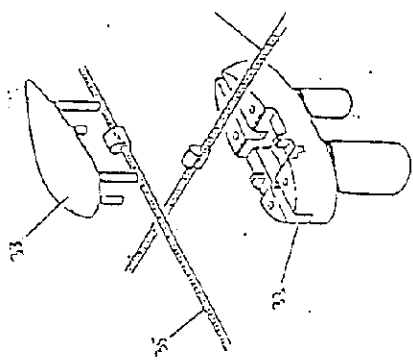
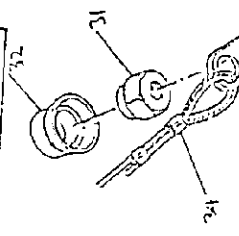
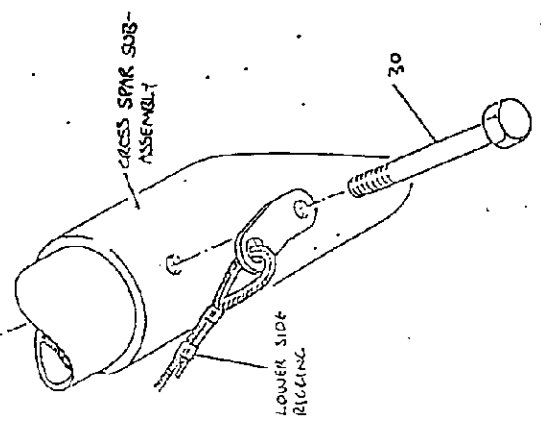
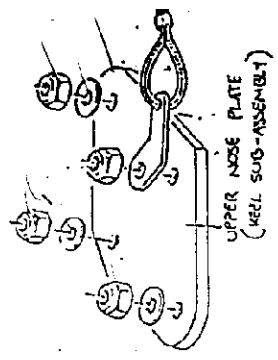
Min pilot clip-in weight: 63kg, including harness.
Max. Pilot Clip-in Weight: 90 kg (198.4 lbs)
Wing area 31.1sqm.
Weight without Packing (dry): 29.1 kg (64.2 lbs)

Item	Description	Part Number	Quantity	Drawing No.
1	LEADING EDGE SUB-ASSEMBLY	-1281-31000	1	SW-89125
2	KEEL SUB-ASSEMBLY	-1R0-31300	1	SW-89124
3	CROSS SPAR SUB-ASSEMBLY	-1281-31600	1	SW-89026
4	CONTROL FRAME SUB-ASSEMBLY	-1281-31000	1	SW-89113
5	KING POST SUB-ASSEMBLY	-1RC-40000	1	SW-89128
6	KING POST HANG STRAP SUB-ASSEMBLY	-1RC-31805	1	SW-89111

<p>General tolerance 1/16" ± 0.1 over 30/1000" ± 0.3 over 300/1000" ± 0.5 over 1000/1000" ± 1.2</p>	
<p>Dimensions (mm) over 6/30" ± 0.2 over 100" ± 0.5 over 1000/1000" ± 1.2</p>	

<p>FACT No. -1281-20000</p>				
<p>SOLAR WINGS LTD. ELM TREE PARK MANTON, MARLBOROUGH WILTSHIRE, SN8 1PS TEL: 0672 86578</p>				
Drawn	Date	Signa	Scale	Drawing No.
DB0893		CLARKE	1:50	SW-89115
Approved	Date	Signa		
Checked	Date	Signa		

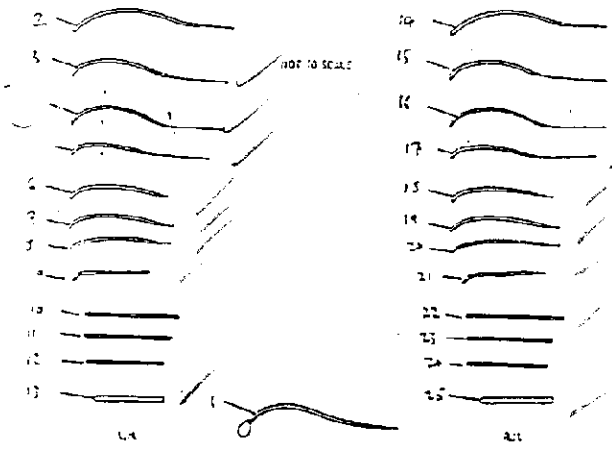
RUNNING THREE 1/2" DIA ASSEMBLY	
SOLAR WINGS LTD	DATE
ELM TREE PARK	REVISED
MANITON, MANITOBA CANADA	BY
WALTS, SIBBIPS	APP
TEL C672 86578	ENR
	SW-89115



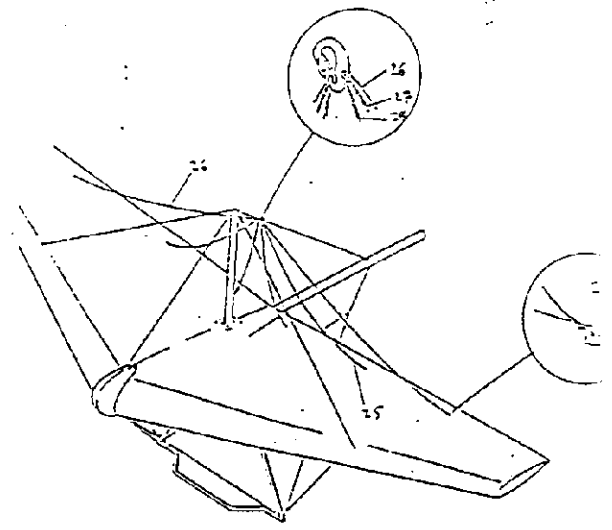
SHEET 2 OF 4

ITEM PART NO.	Description	DRAWING No.	Quantity
30	FIBRA-30		
31	FAN04-NP		
32	PMG-N04		
33	PHC-002		
34	PM-0100		

- 3" x 4" DNF ISX-T
- 1/2" NUTLOCK TYPE NUT
- 1/2" NUT CAP
- Autofoil/King Fast Cap



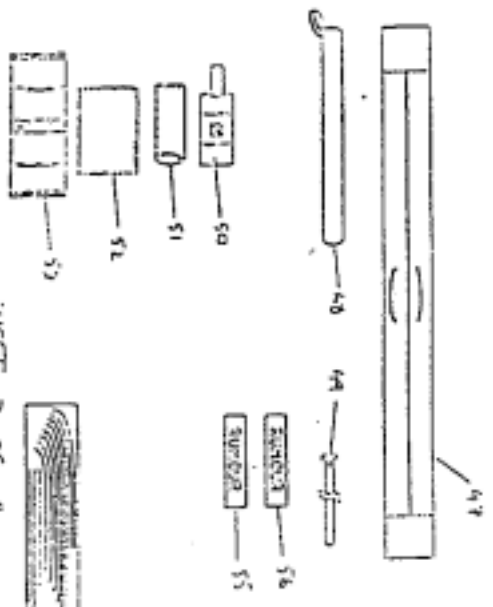
Item Part No.	Description	Quantity
1	Center Rib	1
2	1 Left Hand Upper Rib	1
3	2 Left Hand Upper Ribs	2
4	3 Left Hand Upper Ribs	3
5	4 Left Hand Upper Ribs	4
6	5 Left Hand Upper Ribs	5
7	6 Left Hand Upper Ribs	6
8	7 Left Hand Upper Ribs	7
9	8 Left Hand Upper Ribs	8
10	9 Left Hand Upper Ribs	9
11	10 Left Hand Upper Ribs	10
12	11 Left Hand Upper Ribs	11
13	12 Left Hand Upper Ribs	12
14	13 Left Hand Upper Ribs	13
15	14 Left Hand Upper Ribs	14
16	15 Left Hand Upper Ribs	15
17	16 Left Hand Upper Ribs	16
18	17 Left Hand Upper Ribs	17
19	18 Left Hand Upper Ribs	18
20	19 Left Hand Upper Ribs	19
21	20 Left Hand Upper Ribs	20



Item Part No.	Description	DRAWING No.	Quantity
23	Center Luff Line		
24	124-0100		
25	124-0100		
26	124-0100		

Part No. 4811-010
 RUMOUR THREE 1204 ASSEMBLY

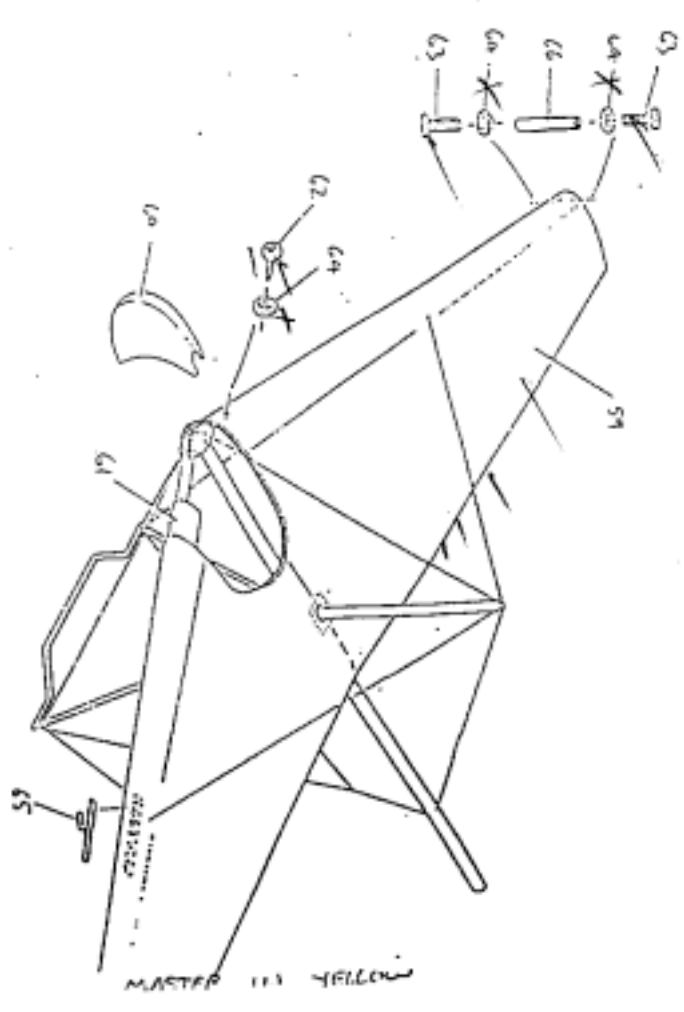
STANDARD WORKS LTD	DATE	11/11/64	BY	A. HARRISON
ITEM TREE PUNCH	APPROVED			
MANUFACTURE	CHANGED			
INSTALLATION				
DATE 1/71				
FILE: 0171, 0157, 0157, 0157				
DRAWING NO.			SW-89115	



SHEET 3 OF 4
 19 SAIL, CARRYING & PACKING ASSEMBLIES

Item Part No.	Description	Quantity
---------------	-------------	----------

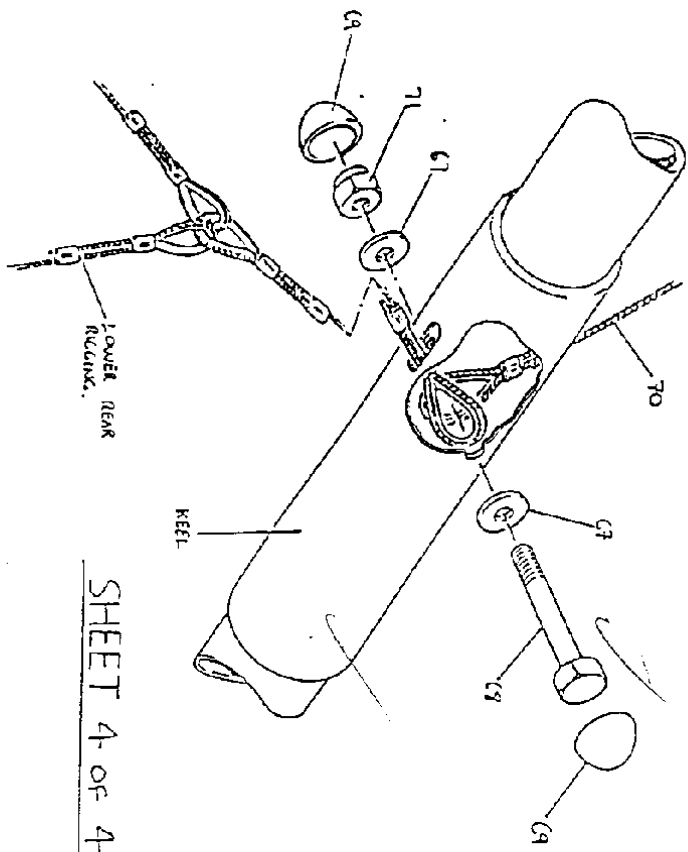
47	YPM-018	Carrying Bag	1
48	YPA-040	310 Bag	1
49	YALN-002	20 60x90 Storage 138H/51C1 - 30 US	1
50	YPA-045	2 Reel Rest Stand Pad	1
51	YPA-046	Bottom Sac Protection Pad	1
52	YAL-013	Top Kneeling Cover	1
53	YAL-010	Lower Kneeling Cover	1
54	YAL-011	Baller Blank, Rubber Ring	1
55	YAL-012	Carrot Blank, Rubber Ring	1
56	YAL-013	Carrot Blank, Rubber Ring	1
57	YAL-014	Carrot Blank, Rubber Ring	1
58	YAL-015	Carrot Blank, Rubber Ring	1
59	YAL-016	Carrot Blank, Rubber Ring	1
60	YAL-017	Carrot Blank, Rubber Ring	1
61	YAL-018	Carrot Blank, Rubber Ring	1
62	YAL-019	Carrot Blank, Rubber Ring	1
63	YAL-020	Carrot Blank, Rubber Ring	1
64	YAL-021	Carrot Blank, Rubber Ring	1
65	YAL-022	Carrot Blank, Rubber Ring	1
66	YAL-023	Carrot Blank, Rubber Ring	1
67	YAL-024	Carrot Blank, Rubber Ring	1
68	YAL-025	Carrot Blank, Rubber Ring	1
69	YAL-026	Carrot Blank, Rubber Ring	1
70	YAL-027	Carrot Blank, Rubber Ring	1
71	YAL-028	Carrot Blank, Rubber Ring	1
72	YAL-029	Carrot Blank, Rubber Ring	1
73	YAL-030	Carrot Blank, Rubber Ring	1
74	YAL-031	Carrot Blank, Rubber Ring	1
75	YAL-032	Carrot Blank, Rubber Ring	1
76	YAL-033	Carrot Blank, Rubber Ring	1
77	YAL-034	Carrot Blank, Rubber Ring	1
78	YAL-035	Carrot Blank, Rubber Ring	1
79	YAL-036	Carrot Blank, Rubber Ring	1
80	YAL-037	Carrot Blank, Rubber Ring	1
81	YAL-038	Carrot Blank, Rubber Ring	1
82	YAL-039	Carrot Blank, Rubber Ring	1
83	YAL-040	Carrot Blank, Rubber Ring	1
84	YAL-041	Carrot Blank, Rubber Ring	1
85	YAL-042	Carrot Blank, Rubber Ring	1
86	YAL-043	Carrot Blank, Rubber Ring	1
87	YAL-044	Carrot Blank, Rubber Ring	1
88	YAL-045	Carrot Blank, Rubber Ring	1
89	YAL-046	Carrot Blank, Rubber Ring	1
90	YAL-047	Carrot Blank, Rubber Ring	1
91	YAL-048	Carrot Blank, Rubber Ring	1
92	YAL-049	Carrot Blank, Rubber Ring	1
93	YAL-050	Carrot Blank, Rubber Ring	1
94	YAL-051	Carrot Blank, Rubber Ring	1
95	YAL-052	Carrot Blank, Rubber Ring	1
96	YAL-053	Carrot Blank, Rubber Ring	1
97	YAL-054	Carrot Blank, Rubber Ring	1
98	YAL-055	Carrot Blank, Rubber Ring	1
99	YAL-056	Carrot Blank, Rubber Ring	1
100	YAL-057	Carrot Blank, Rubber Ring	1



SHEET 3 OF 4
 20 MAIN SAIL ASSEMBLY

Item Part No.	Description	Quantity	Alt. No.
---------------	-------------	----------	----------

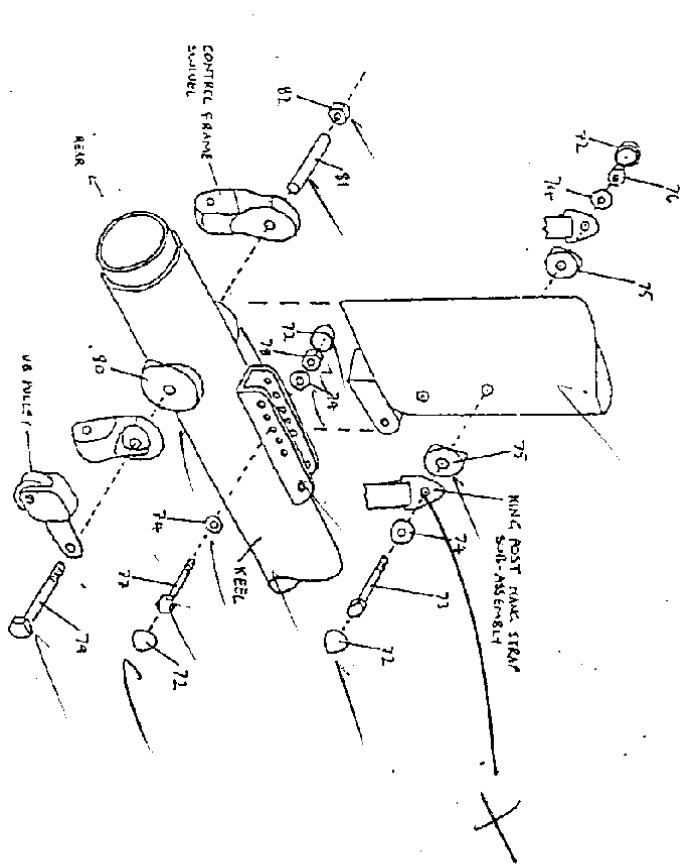
C1	YPM-018	Funnel	1
C2	YPA-045	2 Inse Cone	1
C3	YPM-018	Funnel	1
C4	YPM-018	Funnel	1
C5	YPM-018	Funnel	1
C6	YPM-018	Funnel	1
C7	YPM-018	Funnel	1
C8	YPM-018	Funnel	1
C9	YPM-018	Funnel	1
C10	YPM-018	Funnel	1
C11	YPM-018	Funnel	1
C12	YPM-018	Funnel	1
C13	YPM-018	Funnel	1
C14	YPM-018	Funnel	1
C15	YPM-018	Funnel	1
C16	YPM-018	Funnel	1
C17	YPM-018	Funnel	1
C18	YPM-018	Funnel	1
C19	YPM-018	Funnel	1
C20	YPM-018	Funnel	1
C21	YPM-018	Funnel	1
C22	YPM-018	Funnel	1
C23	YPM-018	Funnel	1
C24	YPM-018	Funnel	1
C25	YPM-018	Funnel	1
C26	YPM-018	Funnel	1
C27	YPM-018	Funnel	1
C28	YPM-018	Funnel	1
C29	YPM-018	Funnel	1
C30	YPM-018	Funnel	1
C31	YPM-018	Funnel	1
C32	YPM-018	Funnel	1
C33	YPM-018	Funnel	1
C34	YPM-018	Funnel	1
C35	YPM-018	Funnel	1
C36	YPM-018	Funnel	1
C37	YPM-018	Funnel	1
C38	YPM-018	Funnel	1
C39	YPM-018	Funnel	1
C40	YPM-018	Funnel	1
C41	YPM-018	Funnel	1
C42	YPM-018	Funnel	1
C43	YPM-018	Funnel	1
C44	YPM-018	Funnel	1
C45	YPM-018	Funnel	1
C46	YPM-018	Funnel	1
C47	YPM-018	Funnel	1
C48	YPM-018	Funnel	1
C49	YPM-018	Funnel	1
C50	YPM-018	Funnel	1
C51	YPM-018	Funnel	1
C52	YPM-018	Funnel	1
C53	YPM-018	Funnel	1
C54	YPM-018	Funnel	1
C55	YPM-018	Funnel	1
C56	YPM-018	Funnel	1
C57	YPM-018	Funnel	1
C58	YPM-018	Funnel	1
C59	YPM-018	Funnel	1
C60	YPM-018	Funnel	1
C61	YPM-018	Funnel	1
C62	YPM-018	Funnel	1
C63	YPM-018	Funnel	1
C64	YPM-018	Funnel	1
C65	YPM-018	Funnel	1
C66	YPM-018	Funnel	1
C67	YPM-018	Funnel	1
C68	YPM-018	Funnel	1
C69	YPM-018	Funnel	1
C70	YPM-018	Funnel	1
C71	YPM-018	Funnel	1
C72	YPM-018	Funnel	1
C73	YPM-018	Funnel	1
C74	YPM-018	Funnel	1
C75	YPM-018	Funnel	1
C76	YPM-018	Funnel	1
C77	YPM-018	Funnel	1
C78	YPM-018	Funnel	1
C79	YPM-018	Funnel	1
C80	YPM-018	Funnel	1
C81	YPM-018	Funnel	1
C82	YPM-018	Funnel	1
C83	YPM-018	Funnel	1
C84	YPM-018	Funnel	1
C85	YPM-018	Funnel	1
C86	YPM-018	Funnel	1
C87	YPM-018	Funnel	1
C88	YPM-018	Funnel	1
C89	YPM-018	Funnel	1
C90	YPM-018	Funnel	1
C91	YPM-018	Funnel	1
C92	YPM-018	Funnel	1
C93	YPM-018	Funnel	1
C94	YPM-018	Funnel	1
C95	YPM-018	Funnel	1
C96	YPM-018	Funnel	1
C97	YPM-018	Funnel	1
C98	YPM-018	Funnel	1
C99	YPM-018	Funnel	1
C100	YPM-018	Funnel	1



SHEET 4 OF 4

UPPER & LOWER REAR RIGGING ASSEMBLY

Part No.	Description	Quantity	Drawing No.
69	6 mm SKELTY RING ONLY	4	
70	2-1/4" x 1/2" UHF ROLL	1	
71	4 mm BALLBEAR SKELTY - CAP ONLY	2	
72	Upper REAR RIGGING	1	
73	1/4" UHF - 0.433" THIN NYLON LOCK ISS. HUR	1	Sur-902235

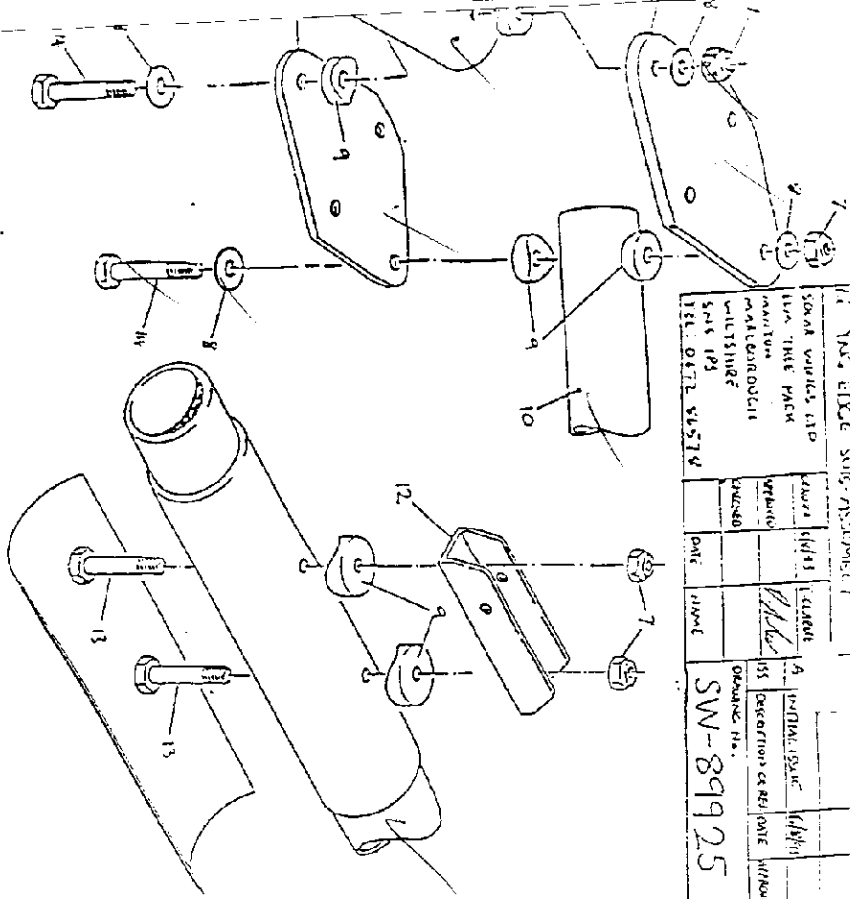


MASTER IN YELLOW

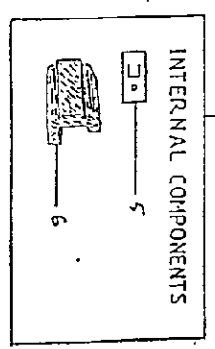
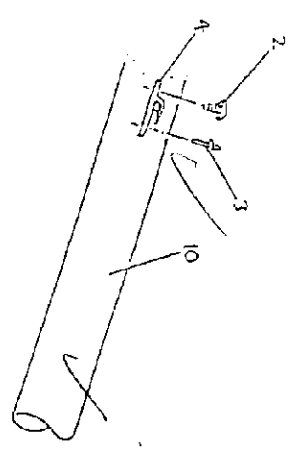
ITEM	PART NUMBER	DESCRIPTION	QUANTITY
72	PAC-RK-6	SKIFFY CAP - 6mm	4
73	COLM-16	1 1/4" x 1/2" ROLL	1
74	PAC-SB5	SKIFFY WASHER	2
75	PAC-WB-215	1 1/2" MS SADDLE	2
76	FNDA-WJT	1/2" TYPE NUT (ANODIZED)	1
77	FNDA-35	1/2" TYPE NUT (ANODIZED)	1
78	FNDA-35	1/2" TYPE NUT (ANODIZED)	1
79	FNDA-35A	1/2" TYPE NUT (ANODIZED)	1
80	FNDA-35A	1/2" TYPE NUT (ANODIZED)	1
81	25" UHF	STEEL WEEZ OASH - R. HPS	2
82	1/4" UHF	1/2" UHF 1/2" TYPE NYLON LOCK NUT	1

RUMOUR TIRE ASM ASSEMBLY			
SPEAR	WHEELS	TIRE	ASSEMBLY
NO.	NO.	NO.	NO.
48103	48103	48103	48103
1	1	1	1

1. INS. EDGE SWIV ASSEMBLY		DATE	DESIGNED BY	ISS	DESCRIPTION	DATE	APPROVED
SOAK WORKS LTD	MANUFACTURE	DATE	DESIGNED BY	ISS	DESCRIPTION	DATE	APPROVED
LIN. TRIM PACK	MATERIALS	DATE	DESIGNED BY	ISS	DESCRIPTION	DATE	APPROVED
MATERIALS	MATERIALS	DATE	DESIGNED BY	ISS	DESCRIPTION	DATE	APPROVED
SWISSING	MATERIALS	DATE	DESIGNED BY	ISS	DESCRIPTION	DATE	APPROVED
SMS IPS	MATERIALS	DATE	DESIGNED BY	ISS	DESCRIPTION	DATE	APPROVED
REL. DATE SYSTEM	MATERIALS	DATE	DESIGNED BY	ISS	DESCRIPTION	DATE	APPROVED

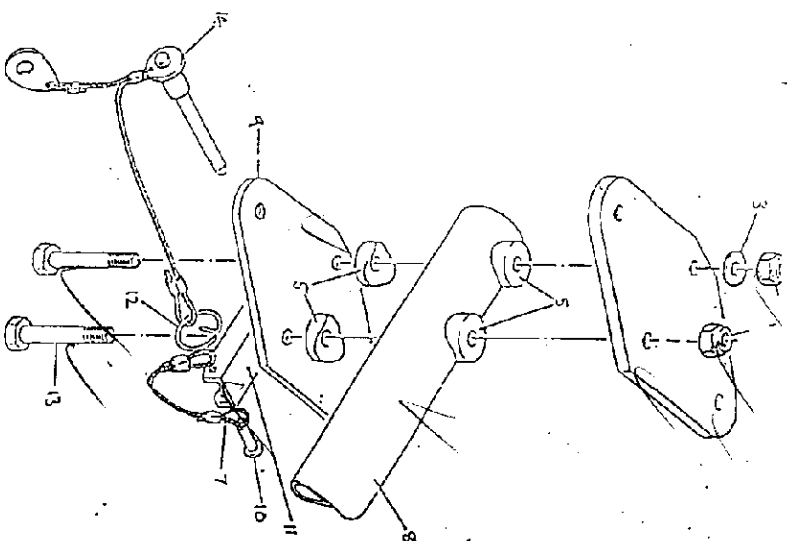
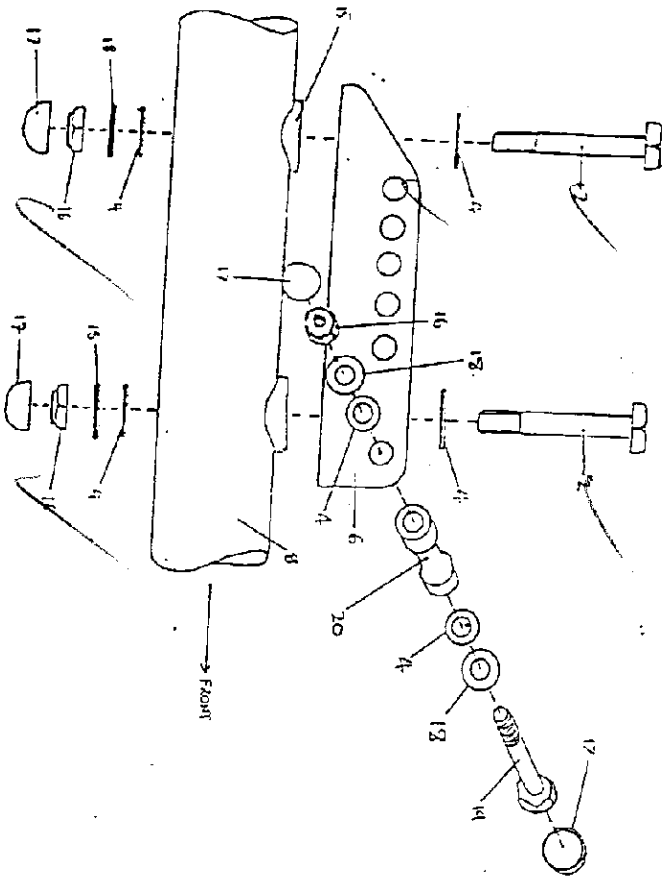


Item Part No.	Description	Quantity	Drawing No.
7	FNH-8-2	6	---
8	FW-14	4	---
9	1/4" UNF 2 Type Nylock Nut	---	---
10	NO PLASTIC SADDLE	8	SW-89925
11	High Hand Loading Edge Assembly	1	SW-89925
12	Low Hand Loading Edge Assembly	2	SW-89925
13	FAH-14	4	---
14	FAH-26	---	---



Item Part No.	Description	Quantity	Drawing No.
1	ZWA-040	2	SW-89925
2	INS-001	4	---
3	INS-16-001	2	---
4	INS-005	2	---
5	INS-002	3	---

MASTER IN YELLOW



Item Part No. :

Description

Quantity

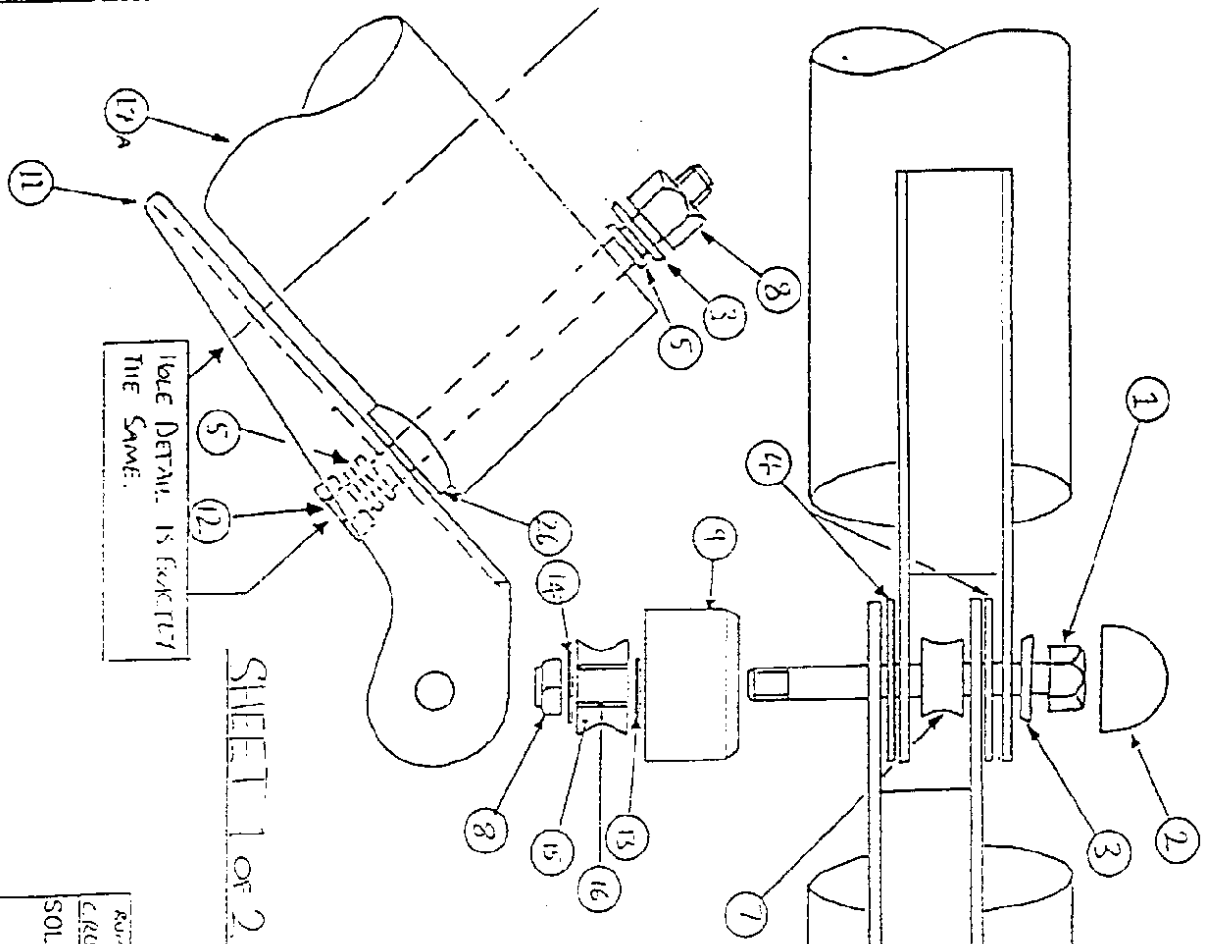
Remarks

Item	Part No.	Description	Quantity	Remarks
1	ENR4-1/2	1/4" UNF x 0.317" Thin Plylock Ins. Nut	2	
2	ENR4-60	Washer, 1/4"	2	
3	ENR4-60	Washer, 1/4"	2	
4	TR6-HE-17	COUPLER, 1/4"	2	
5	TR6-HE-17	HE PLASTIC SCREWS	4	
6	ZC14-016	ROCK POST CHAINWEL	1	
7	TKM-61500	ROCK POST CHAINWEL	1	
8	YRD-31301	ROCK POST CHAINWEL	1	
9	ZPL-001	ROCK POST CHAINWEL	1	
10	ZPC9-001	ROCK POST CHAINWEL	1	
11	ZCR-005	ROCK POST CHAINWEL	1	
12	ZPS3-001	ROCK POST CHAINWEL	1	
13	ZBUC-23	ROCK POST CHAINWEL	1	
14	FR-001	ROCK POST CHAINWEL	1	
15	FR-001	ROCK POST CHAINWEL	1	
16	FR-001	ROCK POST CHAINWEL	1	
17	FR-001	ROCK POST CHAINWEL	1	
18	FR-001	ROCK POST CHAINWEL	1	
19	FR-001	ROCK POST CHAINWEL	1	
20	FR-001	ROCK POST CHAINWEL	1	

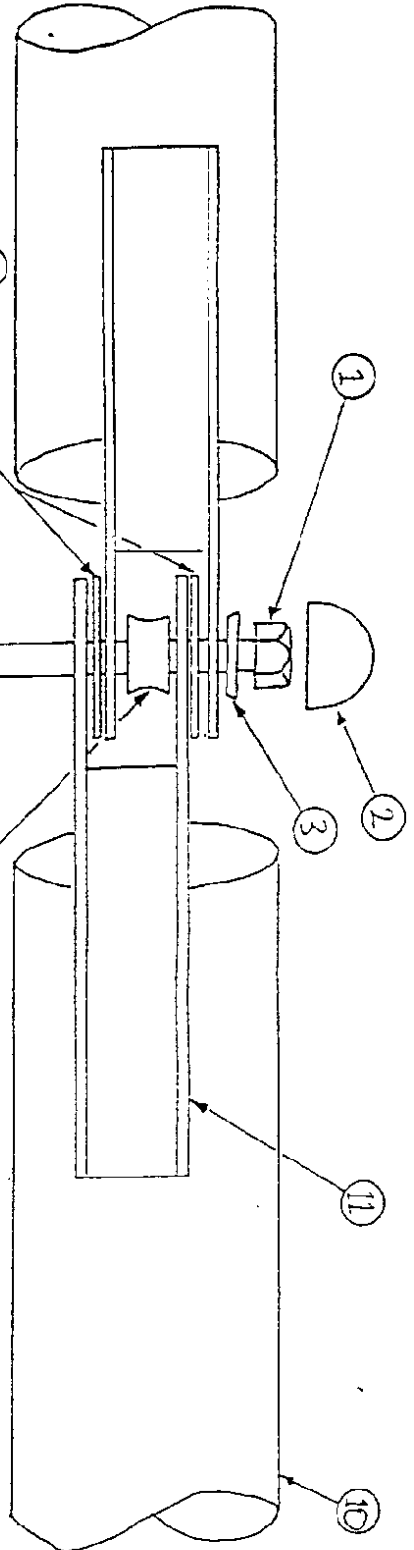
NO	ITEM	QTY	REMARKS
1	ENR4-1/2	2	
2	ENR4-60	2	
3	ENR4-60	2	
4	TR6-HE-17	2	
5	TR6-HE-17	4	
6	ZC14-016	1	
7	TKM-61500	1	
8	YRD-31301	1	
9	ZPL-001	1	
10	ZPC9-001	1	
11	ZCR-005	1	
12	ZPS3-001	1	
13	ZBUC-23	1	
14	FR-001	1	
15	FR-001	1	
16	FR-001	1	
17	FR-001	1	
18	FR-001	1	
19	FR-001	1	
20	FR-001	1	

APPROVED:

ENR4-1/2



SHEET 1 OF 2



Drawing No. SW-89026

MASTER 2 YELLOW

ITEM	DESCRIPTION	STOCK REF.	QTY
1	2 1/2 x 1/4" WSP HEX BOLT (HEAVY-DUTY)	FB04-24	1
2	SNIPPY CAP	PMC-RSC6	2
3	BROWN SKIFFY RINGS	FMCS-06	7
4	NYLON WASHERS	FMDF-001	2
5	TRIP-4 WASHER	FM4-14	12
6	CROSS SPAR RULLEY	RP-5	1
8	1/2" WSP TRIM NUTLOCK WSP	FWV+-NT	8
9	ANASTIC CAP	PCP9-001	1
10	CROSS SPAR - RIGHT HAND	TRRH-31900	1
11	CROSS SPAR - LEFT HAND	ZMS-1EA	2
12	2 1/2 x 1/2" HEX BOLT	FE04-22	4
13	1 1/2" T.S.L.P. WASHER	FWV+-T3	1
14	5/16" W/STEEL WASHER TYPE	FW5-T7	1
15	RUNNER ALL WSP RULLEY	ZMA-016	1
16	GLACIER DASH BEARING	GEA-G3-1	1
17A	CROSS SPAR - LEFT HAND	TRRL-31700	1

SOLAR WINGS AVIATION LTD
 2111 TREE PARK
 HANFORD
 WILTSHIRE BA15 2JF
 TEL: 0872 483711

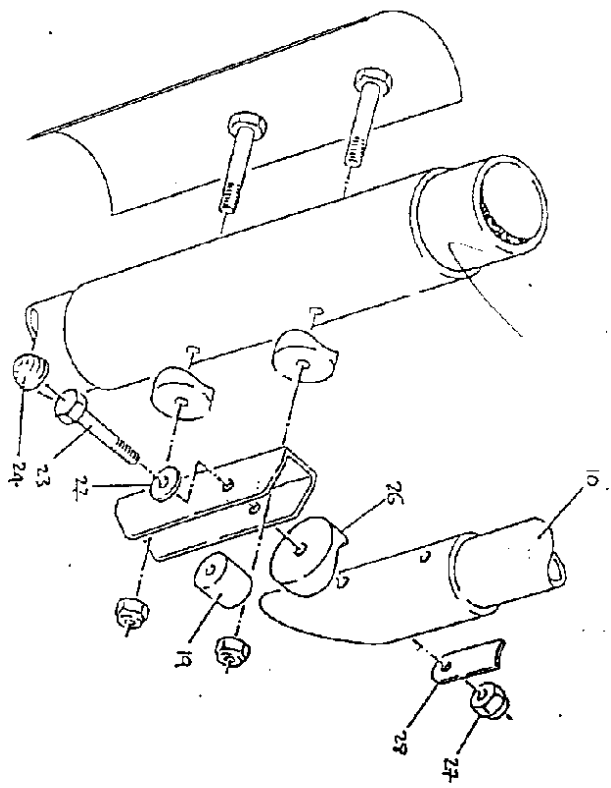
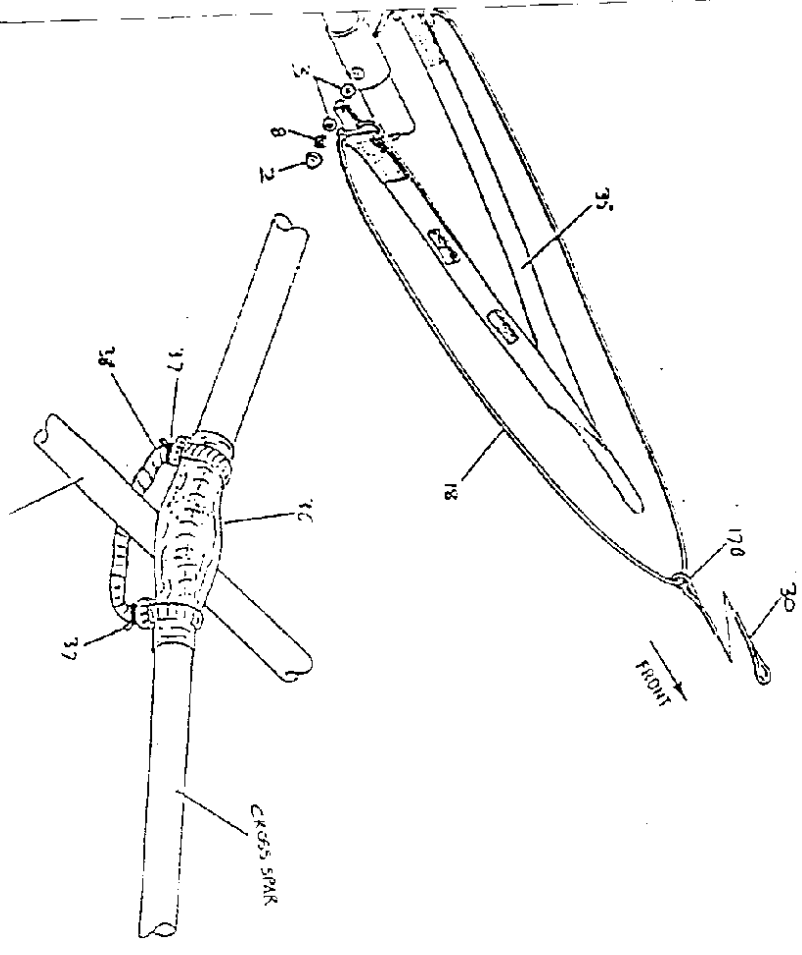
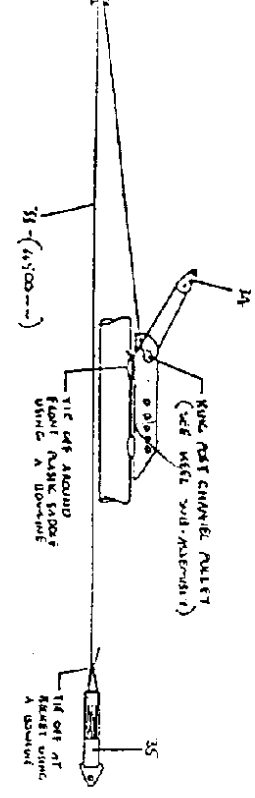
DRAWN: 6/8/97
 APPROVED: [Signature]
 CHECKED: [Signature]

INITIAL ISSUE: 6/8/97
 Description of revision: [Blank]
 Date: [Blank]
 Scale: NTS
 Jig No.: [Blank]

Drawing No. SW-89026

PART NO. 741-1100		SPAR SUB-ASSEMBLY	
REV	DATE	BY	CHKD
1		W. J. GIBSON	
2		W. J. GIBSON	
3		W. J. GIBSON	
4		W. J. GIBSON	
5		W. J. GIBSON	
6		W. J. GIBSON	
7		W. J. GIBSON	
8		W. J. GIBSON	
9		W. J. GIBSON	
10		W. J. GIBSON	
11		W. J. GIBSON	
12		W. J. GIBSON	
13		W. J. GIBSON	
14		W. J. GIBSON	
15		W. J. GIBSON	
16		W. J. GIBSON	
17		W. J. GIBSON	
18		W. J. GIBSON	
19		W. J. GIBSON	
20		W. J. GIBSON	
21		W. J. GIBSON	
22		W. J. GIBSON	
23		W. J. GIBSON	
24		W. J. GIBSON	
25		W. J. GIBSON	
26		W. J. GIBSON	
27		W. J. GIBSON	
28		W. J. GIBSON	
29		W. J. GIBSON	
30		W. J. GIBSON	
31		W. J. GIBSON	
32		W. J. GIBSON	
33		W. J. GIBSON	
34		W. J. GIBSON	
35		W. J. GIBSON	
36		W. J. GIBSON	
37		W. J. GIBSON	
38		W. J. GIBSON	
39		W. J. GIBSON	
40		W. J. GIBSON	
41		W. J. GIBSON	
42		W. J. GIBSON	
43		W. J. GIBSON	
44		W. J. GIBSON	
45		W. J. GIBSON	
46		W. J. GIBSON	
47		W. J. GIBSON	
48		W. J. GIBSON	
49		W. J. GIBSON	
50		W. J. GIBSON	
51		W. J. GIBSON	
52		W. J. GIBSON	
53		W. J. GIBSON	
54		W. J. GIBSON	
55		W. J. GIBSON	
56		W. J. GIBSON	
57		W. J. GIBSON	
58		W. J. GIBSON	
59		W. J. GIBSON	
60		W. J. GIBSON	

SHEET 2 OF 2

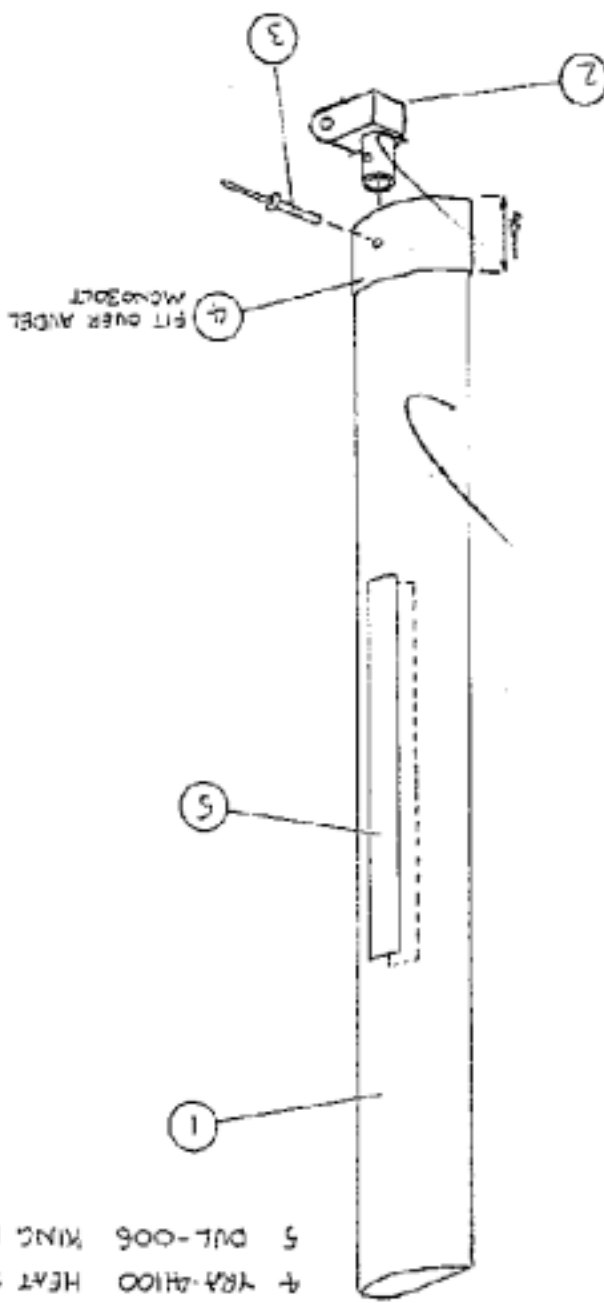


MASTER IN YELLOW

LEADING EDGE TO CROSS SPAR ASSEMBLY

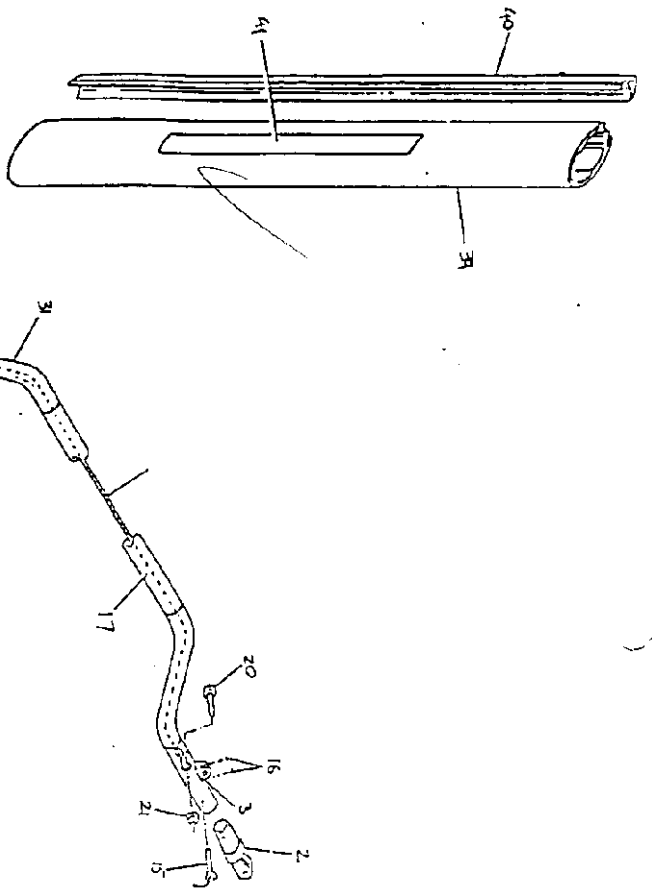
Item	Part No.	Description	Quantity	Demink No.
178	GEN-001	GRASS SPAR LEAD EYELET	1	
179	UNR-001	WOOD B PLATT ANTILOD CORD	1	
18	253-007	ACE LEADING EDGE CHANNEL SPACER	1	SW-40181
14	FWSS-3	RESISTANT STOOD TYPE?	1	
20				
21				
22	PNC-553	8 mm SLITTY RING ONLY	2	
23	PAUS-24	2-1/2" x 5/16" UNF HEX. BOLT	2	
24	PNC-35C4	8 mm Raised slitty - cap only	2	
25	FRK-001	SAFETY RING	2	
26	PA5-16-12	2-1/2" x 1/4" PLASTIC SADDLE	2	
27	PAUS-19	5/16" UNF B TYPE CYLINDER NUT	2	
28	Z57-03E	RILL BAND SPACER 3 TYPE	2	SW-57355
29	RF-15	NUTS	1	
30	AVCS-001	3" SHOCK CORD	1	
31				
32				
33	VPK-001	WOOD ANCHOR & PLATT CORD	1	
34	RF-14	MARKED EYE W/PLATE 14	1	
35	RF-11	RESISTANT CORD	1	
36	VPK-001	WOOD ANCHOR & PLATT CORD	1	

37068-MS		NAME	DATE	TEL: 0522 95378
ISSUE NO.	ISSUE NO.	ISSUE NO.	ISSUE NO.	ISSUE NO.
DESCRIPTION OF REV	DATE	ISSUE NO.	DATE	ISSUE NO.
A INITIAL ISSUE	1/8/73	ISSUE NO.	DATE	ISSUE NO.
		ISSUE NO.	DATE	ISSUE NO.
		ISSUE NO.	DATE	ISSUE NO.

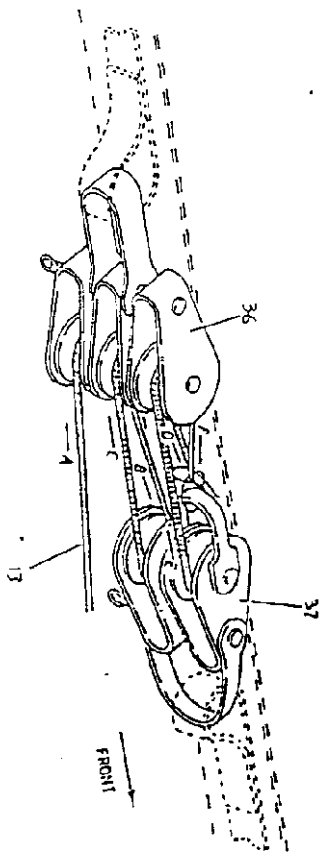
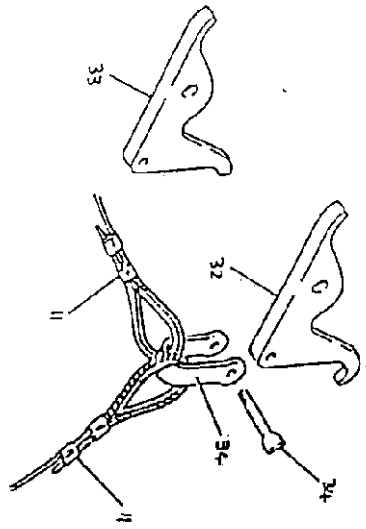


- 1 KING POST 1/8" x 4000
 2 KING POST FOOT 2MA-036
 3 3/16" DIAMETER x 3/8" 3FR6-12-002
 4 HEAT SHRINK 4RA-4100
 5 KING POST STICKER 5DUL-006
 WEDGE BOLT
 ALL PARTS

YRC-4000 KAMON 2/3
 KING POST SUB-ASSEMBLY
 SOAR WINGS LTD
 ELM TREE PARK
 MANTON
 MARLBOROUGH
 WILTSHIRE
 SN8 1PS
 TEL: 0522 95378



SHEET 2 OF 2



Item Part No.	Description	Quantity	DRAWING No
31	ROCKEY STICK, GRIPS	2	---
32	5 CATCH, ANODISED (OLD VERSION)	1	---
33	5 CATCH, ANODISED (NEW VERSION)	1	---
34	5mm STRIP SINKER, SOLID STAIN	1	---
35	TRIPLE BLOCK - TPOOS - R TRIVE	1	---
36	DOUBLE BLOCK AND GRACLET - R TRIVE	1	---

39	YBA-51000	R CONTROL FRAME SLIDE ASSEMBLY	2	SV-670201-
40				
41				

RUNNING 3 ITEM		PART No YBA-51000	
CONTROL FRAME SUB-ASSEMBLY			
STOCK NUMBER	QTY	DATE	BY
YBA-51000	2	1/1/83	---
MANUFACTURER	DATE	ISS	DESCRIPTION OR REV
MARKBOROUGH	---	---	---
CUSTOMER			