



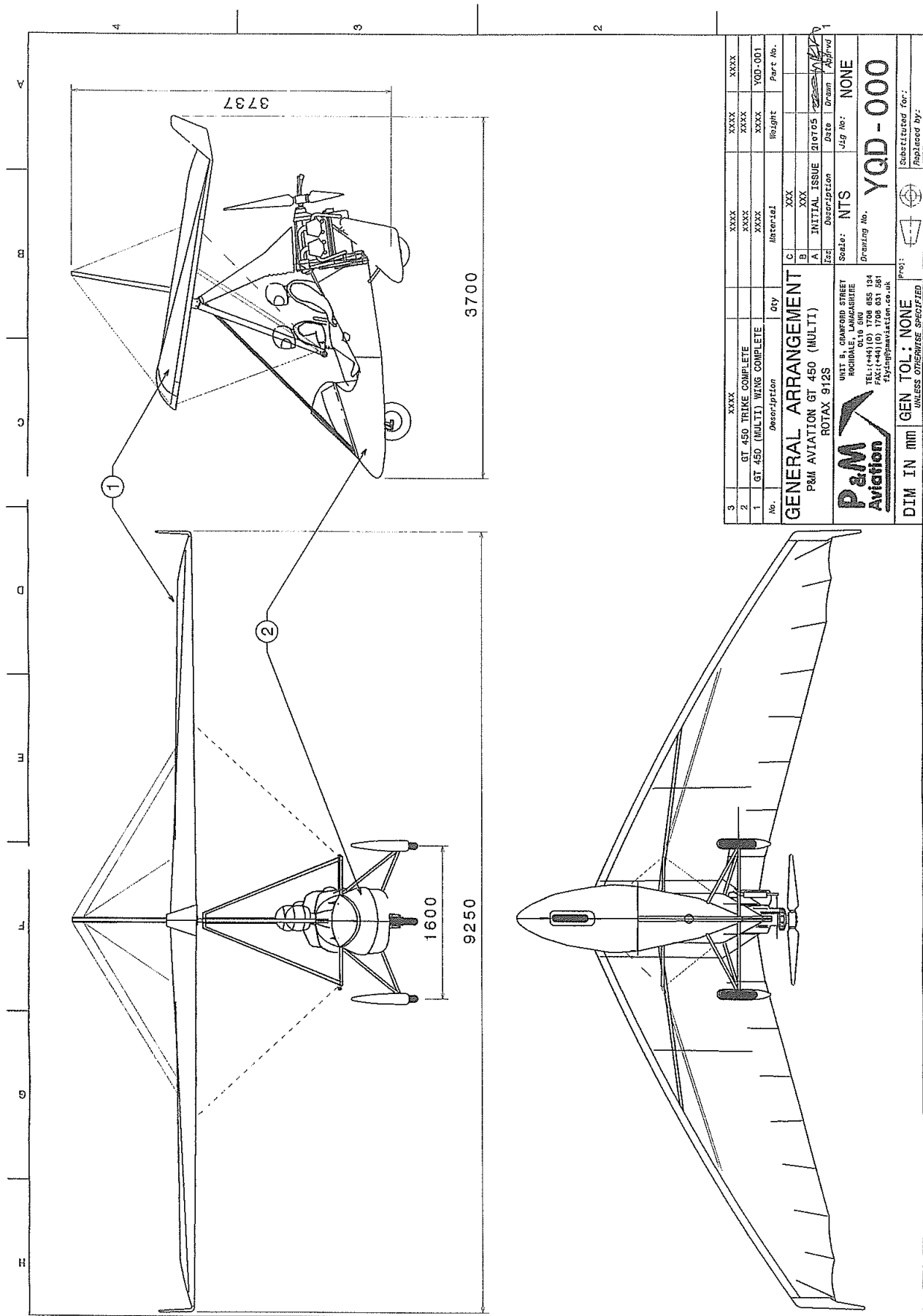
P&M Aviation Ltd
Unit B
Crawford Street
Rochdale
Lancashire OL16 5NU
Great Britain
Tel: +44 (0) 1706 655134
Fax: +44 (0) 1706 631561
flying@pmaviation.co.uk

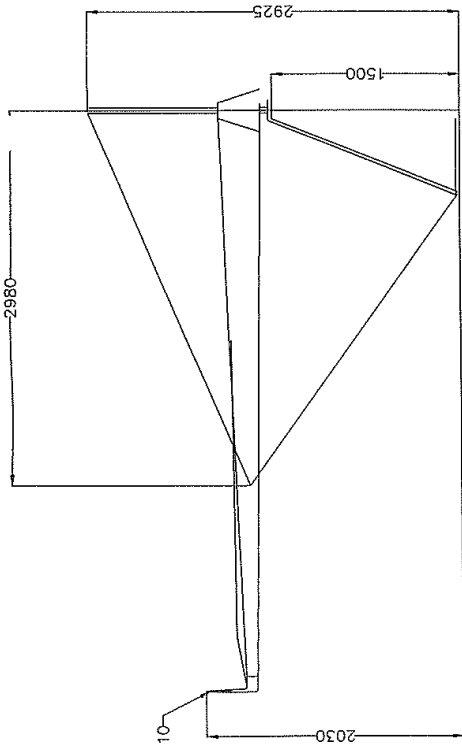
Quik GT450 Wing Illustrated Parts Catalogue

Contents	Page No	
YQD-000	General Arrangement	2
YQD-001	GT450 Wing	3
YQD-010	Keel Assembly	4
YQD-020	Leading Edge Assembly	5
YQD-030	Cross Boom Assembly	6
YQD-040	Control Frame	7
YQD-050	Wing Final Assembly	9
YQD-051	King Post Assembly	13
YQD-070	Fin Tube Assembly	14
YQD-080	Tip Fin Assembly	15
YQD-7100	Wing Ribs	16
YQC-017	Keel Rigging Strut Assembly	17

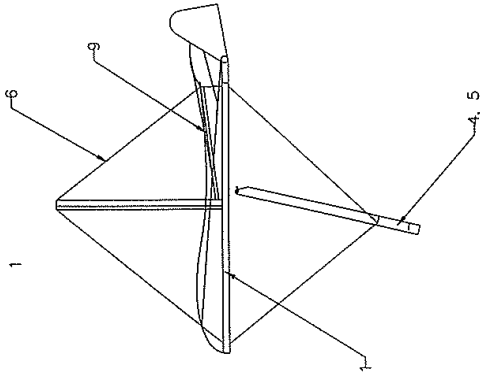
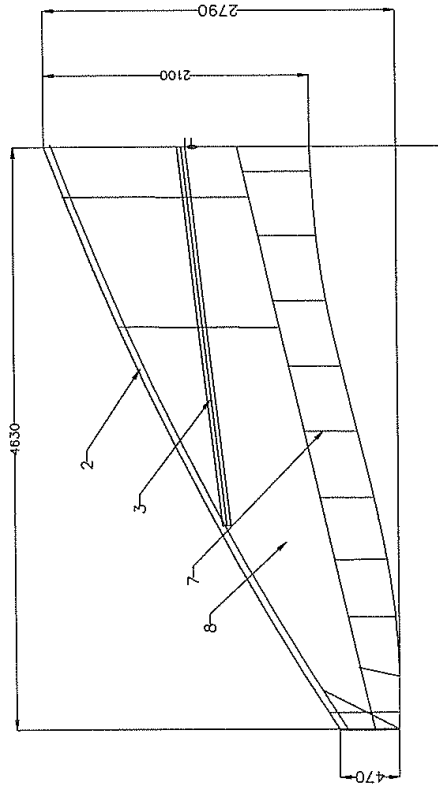
This manual should be used in conjunction with the Operators Manual. Some parts that are listed are not user serviceable. The following drawings are provided as a convenience to aid identification of parts for the ordering of spare parts from the factory. When ordering parts be sure to include the exact aircraft type and model, including engine number and aircraft registration/serial number, together with a description of the part and part number where applicable.

All drawings are copyright of P&M Aviation Ltd.



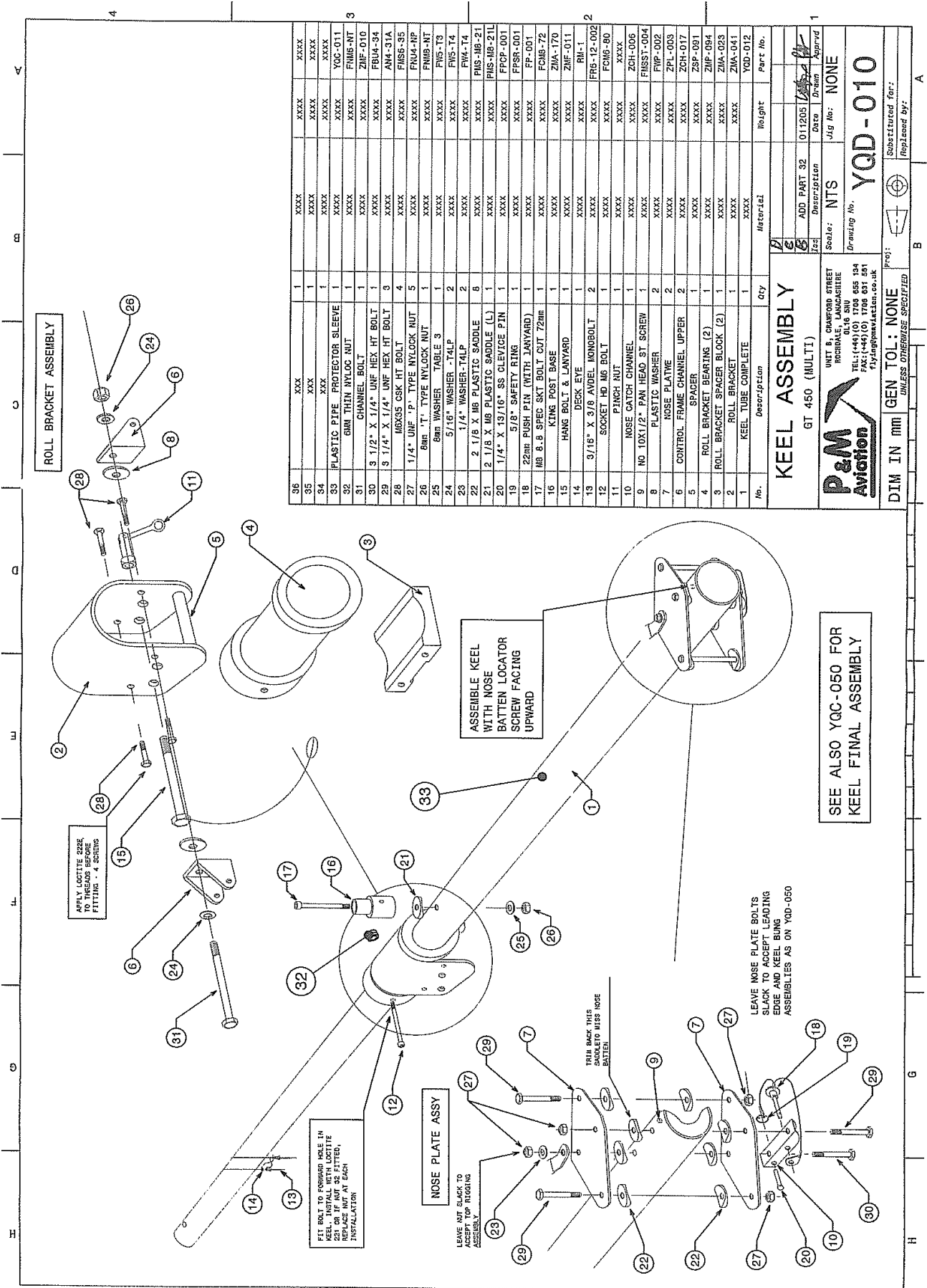


area 13.0 sq.m
 span 9260mm
 aspect ratio 6.59
 tip fin area 0.26 sq m (both fins)



10	TIP FIN ASSEMBLY	YQD-080
9	FIN TUBE ASSEMBLY	YQD-070
8	SAIL GENERAL ARRANGEMENT	YQD-060
7	BATTEN PLANE ASSEMBLY	YQD-71000
6	FINAL ASSEMBLY	YQD-050
5	TRAINING BAR ASSEMBLY	YQC-0401
4	CONTROL FRAME ASSEMBLY	YQD-040
3	CROSS SPAR ASSEMBLY	YQD-030
2	LEADING EDGE ASSEMBLY	YQD-020
1	KEEL ASSEMBLY	YQD-010

A	INITIAL ISSUE	21/07/05	PROJ. APPROVED	Checked	DRAWN
Iss.	Description of revision	Date	Approved		
P&M AVIATION LTD					
Drawing/Part No. YQD-001					
GT450 WING 13 sq m			PROJ. APPROVED		
DIM. IN mm SCALE: NTS			PROJ. APPROVED		
GEN. TOL. +/- 1.0mm			PROJ. APPROVED		



No.	Description	Qty	Material	Height	Part No.
36	XXX	1	XXXX	XXXX	XXXX
35	XXX	1	XXXX	XXXX	XXXX
34	PLASTIC PIPE PROTECTOR SLEEVE	1	XXXX	XXXX	YQC-011
33	GMN THIN NYLOC NUT	1	XXXX	XXXX	FMS-NT
32	CHANNEL BOLT	1	XXXX	XXXX	ZNF-010
31	3 1/2" X 1/4" UNF HEX HT BOLT	1	XXXX	XXXX	FBUA-34
30	3 1/4" X 1/4" UNF HEX HT BOLT	3	XXXX	XXXX	AM4-31A
29	MX55 CSK HT BOLT	4	XXXX	XXXX	FMS-35
28	1/4" UNF "P" TYPE NYLOC NUT	5	XXXX	XXXX	FNU4-HP
27	6mm "T" TYPE NYLOC NUT	1	XXXX	XXXX	FNM9-NT
26	6mm WASHER - T4LP	2	XXXX	XXXX	FWS-T4
25	5/16" WASHER - T4LP	2	XXXX	XXXX	FWS-T4
24	1/4" WASHER-TALP	2	XXXX	XXXX	FWS-T4
23	2 1/8 X MB PLASTIC SADDLE	6	XXXX	XXXX	PUS-MB-21
22	2 1/8 X MB PLASTIC SADDLE (L)	1	XXXX	XXXX	FMS-MB-21L
21	1/4" X 13/16" SS SLEEVGE PIN	1	XXXX	XXXX	FPSP-001
20	3/8" SAFETY RING	1	XXXX	XXXX	FP-001
19	22mm PUSH PIN (WITH JANVARD)	1	XXXX	XXXX	FCMG-72
18	MB B.B SPEC SKT BOLT CUT 72mm	1	XXXX	XXXX	ZMA-170
17	KING POST BASE	1	XXXX	XXXX	ZMF-011
16	HANG BOLT & JANVARD	1	XXXX	XXXX	RM-1
15	DECK EYE	1	XXXX	XXXX	FRB-12-002
14	3/16" X 3/8 ANVREL MONOBOLT	2	XXXX	XXXX	FCMG-80
13	SOCKET HD MS BOLT	1	XXXX	XXXX	XXXX
12	PINCH NUT	1	XXXX	XXXX	XXXX
11	NOSE GATCH CHANNEL	1	XXXX	XXXX	XXXX
10	NO 10X1/2" PAN HEAD ST SCREW	1	XXXX	XXXX	FMSST-004
9	PLASTIC WASHER	2	XXXX	XXXX	FWP-002
8	NOSE PLATIVE	2	XXXX	XXXX	ZBI-003
7	CONTROL FRAME CHANNEL LIPPER	2	XXXX	XXXX	ZOH-017
6	SPACER	1	XXXX	XXXX	ZSP-091
5	ROLL BRACKET BEARING (2)	1	XXXX	XXXX	ZMA-023
4	ROLL BRACKET SPACER BLOCK (2)	1	XXXX	XXXX	ZMA-041
3	ROLL BRACKET	1	XXXX	XXXX	YQD-012
2	KEEL TUBE COMPLETE	1	XXXX	XXXX	XXXX
1	KEEL ASSEMBLY	1	XXXX	XXXX	XXXX

KEEL ASSEMBLY
GT 450 (MULTI)

ADD PART 32
Description: NTS
Date: 011205
Drawn: [Signature]
Approved: [Signature]

Scale: NTS
Drawing No. YQD-010
J/g No: NONE

Substituted for:
Replaced by:

UNIT 8, CHAMFORD STREET
ROCHDALE, LANCASHIRE
OL16 8NU
TEL: (+44) (0) 1708 655 134
FAX: (+44) (0) 1708 655 131
HYDROAVIATION.CO.UK

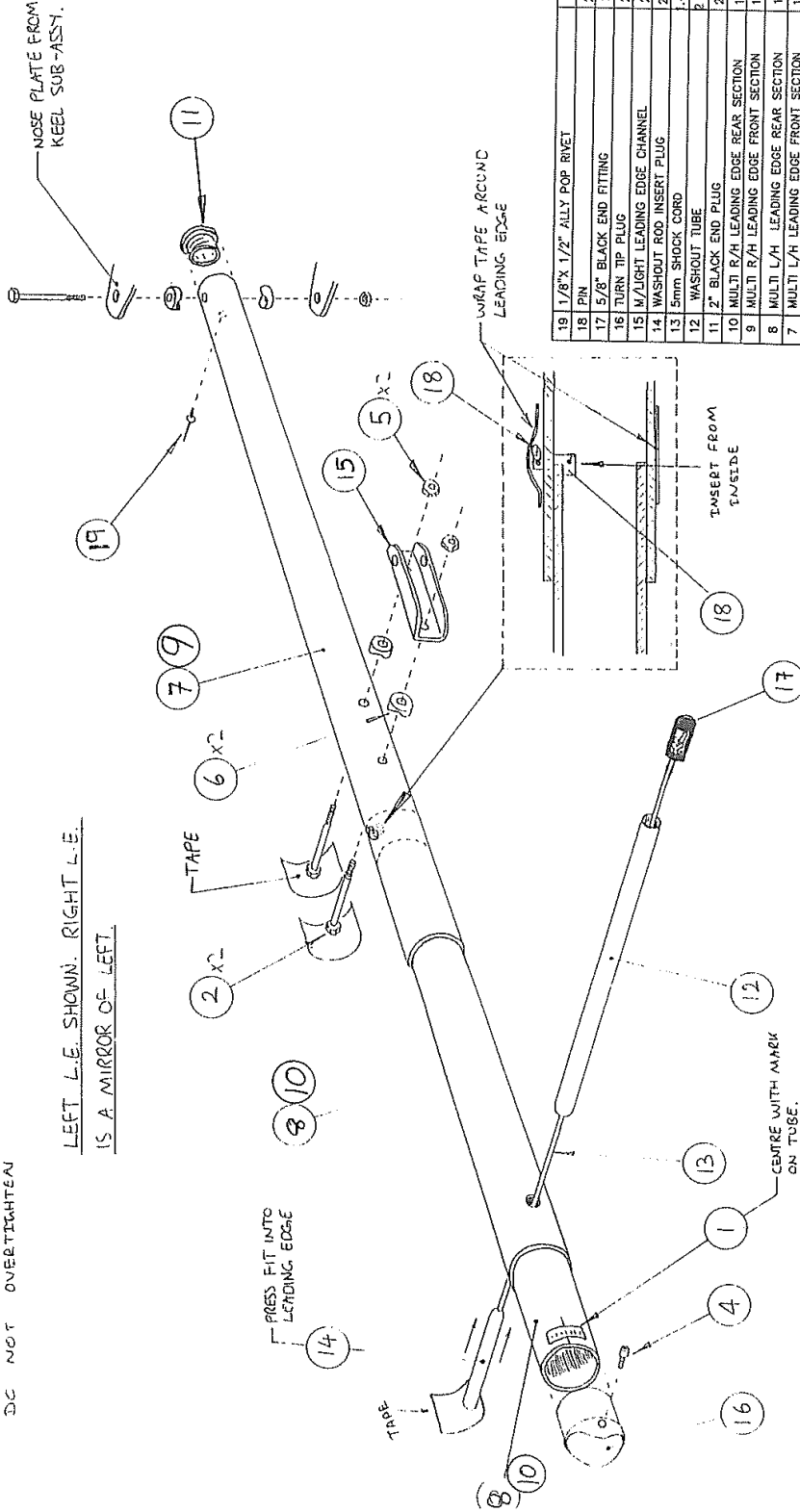
P&M Aviation

DIM IN mm GEN TOL: NONE
UNLESS OTHERWISE SPECIFIED

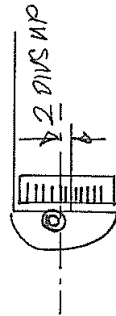
NOTE

NYLOCK NUTS SHOULD BE TIGHTENED TO BRING THE ASSEMBLY FIRMLY TOGETHER DO NOT OVERTIGHTEN

LEFT L.E. SHOWN. RIGHT L.E. IS A MIRROR OF LEFT.



NOTE - SET TIPS 2 DIVISIONS UP RELATIVE TO CENTER, FOR INITIAL BUILD.



19	1/8" X 1/2" ALLOY POP RIVET	2	FR4-16-001
18	PIN	2	FRCP-001
17	5/8" BLACK END FITTING	2	PEP-003
16	TURN TIP PLUG	2	ZMP-055
15	M/LIGHT LEADING EDGE CHANNEL	2	ZCH-018
14	WASHOUT ROD INSERT PLUG	2	ZIN-010
13	5mm SHOCK CORD	1.4M	VS05-001
12	WASHOUT TUBE	2	YOB-77130
11	2" BLACK END PLUG	2	PEP16-001
10	MULTI R/H LEADING EDGE REAR SECTION	1	YOD-026
9	MULTI R/H LEADING EDGE FRONT SECTION	1	YOD-024
8	MULTI L/H LEADING EDGE REAR SECTION	1	YOD-025
7	MULTI L/H LEADING EDGE FRONT SECTION	1	YOD-023
6	2 1/4 X 1/8 PLASTIC SADDLE	8	FMS-MB-22
5	1/4 UNF P. TYPE NYLOCK NUT	6	FNUM-NP
4	M6 X 20mm SOCKET CAP SCREW	2	FOM6-20
2	1/4 UNF HEX BOLT	4	AN4-27A
1	TIP ADJUST PLACARD	2	DP-030

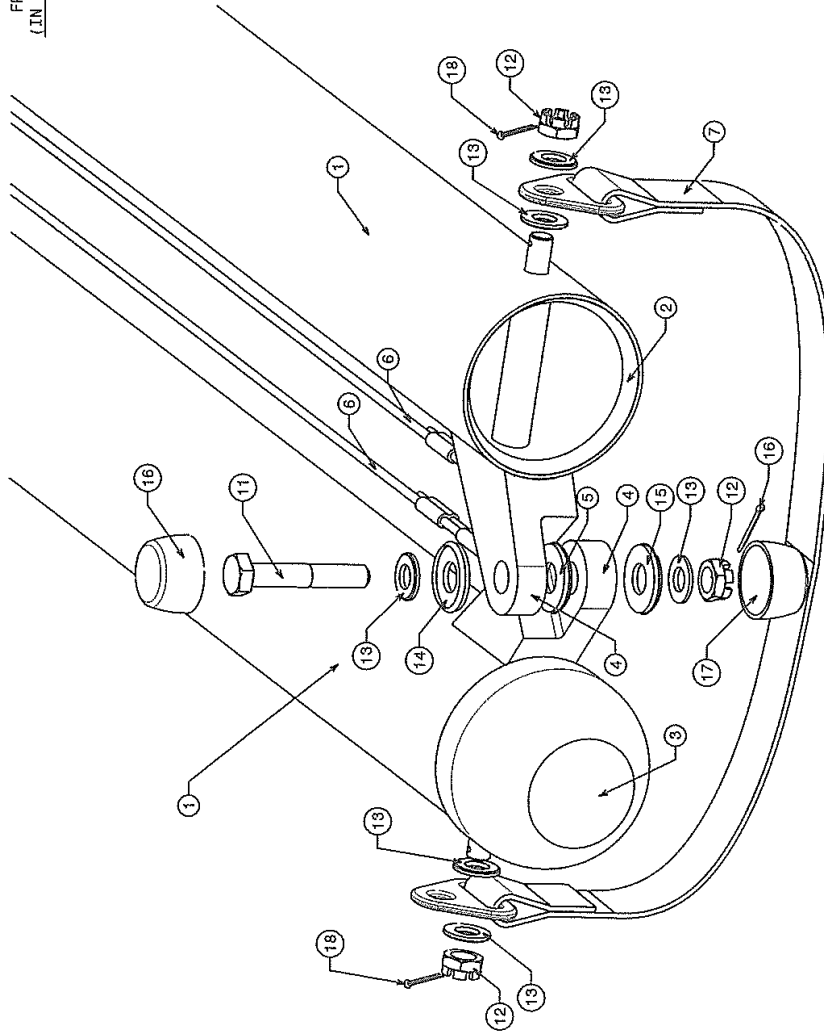
A	INITIAL ISSUE	Date	Approved	Checked	Drawn
Iss.	Description of revision				

P&M AVIATION Ltd
 ELM TREE PARK,
 MANTON,
 WILTSHIRE,
 SN81PS

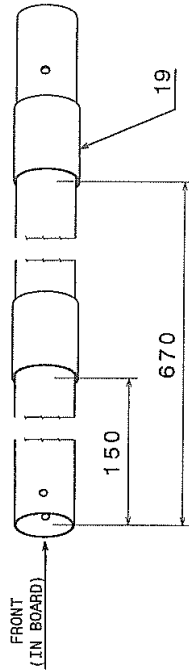
MULTI LEADING EDGE ASSEMBLY

Drawing No. YQD-020

NOTE:
CASTLE NUTS SHOULD BE
TIGHTENED TO BRING THE
ASSEMBLY FIRMLY TOGETHER
DO NOT OVERTIGHTEN



POSITION OF PROTECTOR
SLEEVES ON CROSS SPAR



No.	Description	Qty	Material	Weight	Part No.
21	XXX	X	XXXX		XXXX
20	XXX	X	XXXX		XXXX
19	NEOPRENE XBOOM PROTECTOR	4	NEOPRENE SHARKSKIN		YQB-040
18	1 X 1/16" SPLIT PIN	3	XXXX		FRSP-002
17	10MM RAISED SKIFFY CAP	1	XXXX		PMG-RSC10
16	8MM RAISED SKIFFY CAP	1	XXXX		PMG-RSC8
15	10MM SKIFFY WASHER	1	XXXX		PMG-SB10
14	8MM SKIFFY WASHER	1	XXXX		PMG-SB8
13	5/16" TSLP WASHER	6	XXXX		FN5-T3
12	5/16" UNF CASTLE NUT	3	XXXX		FNUS-CN
11	ANS-15 AIRCRAFT HEX BOLT	1	XXXX		FBA3-15
10	(SPARE)	X	XXXX		XXXX
9	(SPARE)	X	XXXX		XXXX
8	QUIK/MULTI ANTIFLOAT WEBBING	X	XXXX		XXXX
7	MULTI RESTRAINT CABLE	1	NYLON/ S-STEEL		YQC-027
6	PIVOT BLOCK SPACER	1	S-STEEL		YQC-D32
5	CROSS SPAR PIVOT BLOCK (11mm)	1	NYLON		ZSP-008
4	CROSS SPAR CENTRE BALL	2	HE30 TF OR 6082 T6		ZMA-002
3	CROSS SPAR BALL SEAT	1	WHITE NYLON		ZMP-010
2	MULTI CROSS SPAR (L/R)	2	HE30 TF OR 6082 T6		ZTH-009
1	MULTI CROSS BOOM	1	HE30 TF OR 6082 T6		YQD-031

MULTI CROSS BOOM ASSY

UNIT 8, STAMFORD STREET
RECONSTRUCTION CENTRE
0116 8HU
TEL:(+44)(0) 1705 655 134
FAX:(+44)(0) 1705 631 561
p3engineering@aol.co.uk

P&M Aviation

Scale: 2:3

Initial Issue: 210705

Drawn: [Signature]

Approved: [Signature]

Proj: GEN TOL: NONE

Substituted For: YQD-030

Replaced by: [Signature]

4

3

2

1

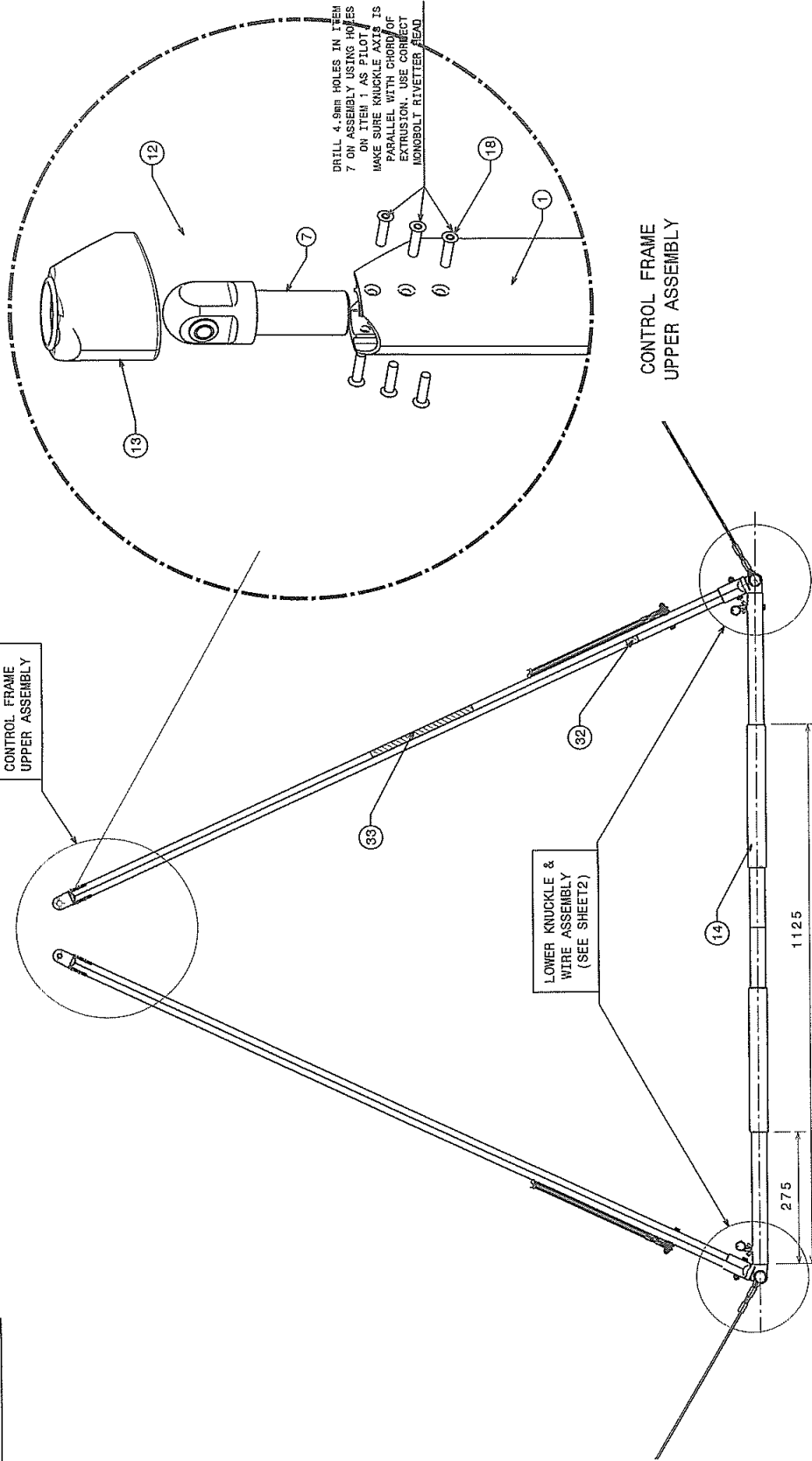
H

G

B

A

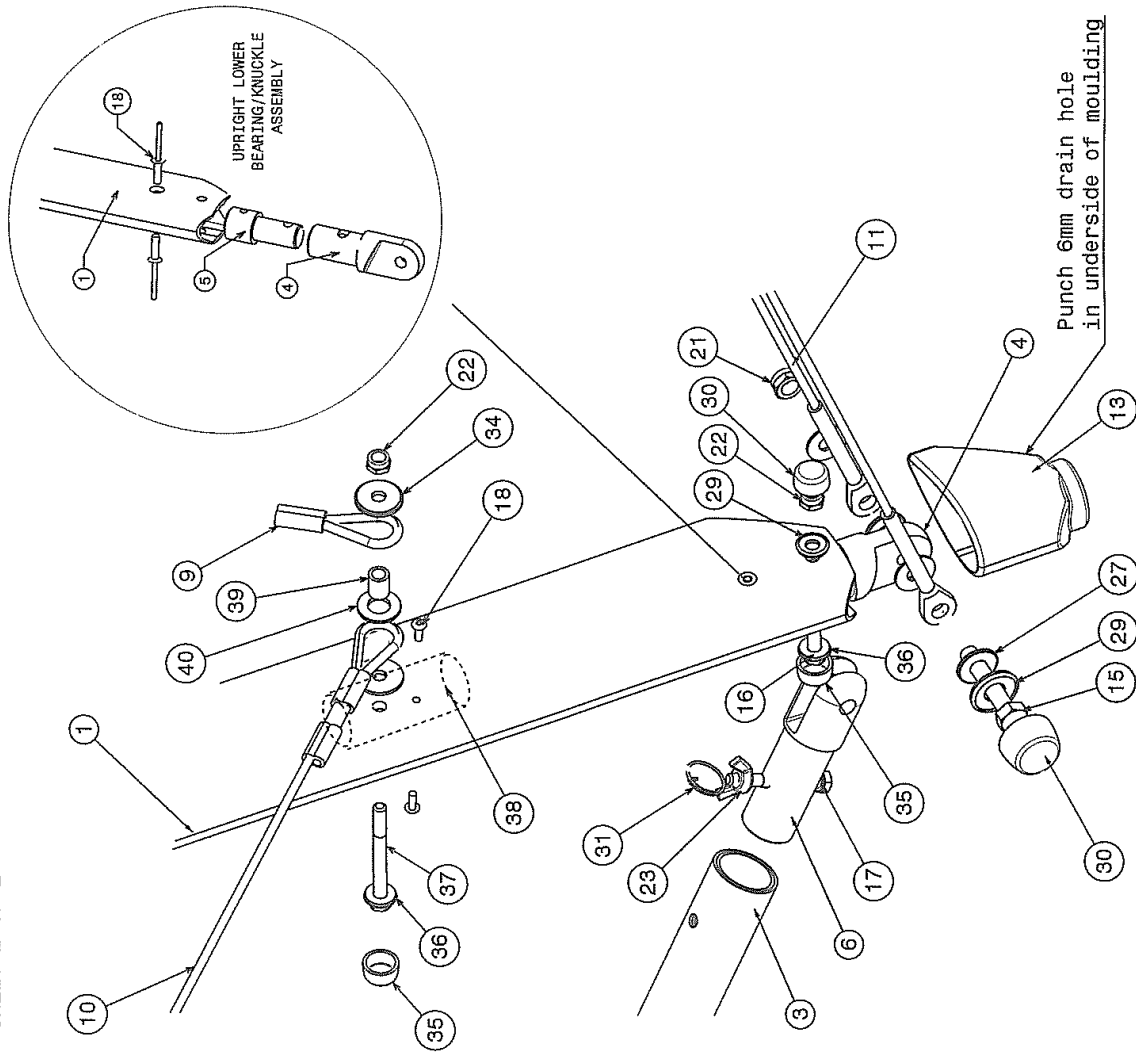
SHEET 1 OF 2



C	XXX	INITIAL ISSUE	210703	Date	Drawn	Approved
B	XXX	Description				
A	XXX	MULTI CONTROL FRAME		Scale:	1:2	Jig No:
		UNIT 8, CRAWFORD STREET ROOIBALE, LAMAGASHIRE 0L16 5DU TEL: (44) (0) 1708 833 881 FAX: (44) (0) 1708 833 881 flyings@pnaviation.co.uk		Drawing No:		YQD-040
		P&M Aviation		Substituted for:		
		DIM IN mm		GEN TOL: NONE		Replaced by:
		UNLESS OTHERWISE SPECIFIED				

CONTROL FRAME COMPLETE
Scale: 1:8

SHEET 2 OF 2



No.	Description	Qty	Material	Weight	Part No.
46					
45	XXX	X	XXXX		
44	XXX	X	XXXX		
43	XXX	X	XXXX		
42	XXX	X	XXXX		
41	XXX	X	XXXX		
40	10MM WASHER	2	XXXX		FW10-B
39	SPACER BUSH	2	XXXX		ZSP-308
38	AERFOIL PLUG	2	XXXX		ZMP-195
37	AN4-22A HEX BOLT	2	XXXX		FBA4-22A
36	6MM SKIFFY RING	4	XXXX		PMC-S06
35	6MM RAISED SKIFFY CAP	4	XXXX		PMC-RSC6
34	1/4" X 3/4 MS WASHER	6	XXXX		FW4-12
33	LARGE 2 COLOUR STICKER	2	XXXX		DVL-004
32	NAW AND MAIN PLACARDS	1	XXXX		DP-058
31	5/8" SAFETY RING	2	XXXX		SFRS-001
30	6MM RAISED SKIFFY CAP	4	XXXX		PMC-S08
29	6MM SKIFFY RING	4	XXXX		PMC-S08
28	1/4" M STEEL WASHER	8	XXXX		FW4-T4
27	5/16" M STEEL WASHER TAILP	2	XXXX		FW5-T4
26	(SPARE)	X	XXXX		XXXX
25	(SPARE)	1	XXXX		XXXX
24	1/4" UNF WING NUT	2	XXXX		FWU4-WN
23	1/4" UNF P TYPE NYLOCK NUT	2	XXXX		FWU4-HP
22	5/16" UNF P TYPE NYLOCK NUT	2	XXXX		FWU5-HP
21	(SPARE)	1	XXXX		XXXX
20	(SPARE)	1	XXXX		XXXX
19	3/16 X 3/8 C-SUNK AVDEL NUBOLT	16	XXXX		FR6-12-00
17	AN4-15 HEX A/C BOLT	2	XXXX		FBA4-15
16	AN4-17A HEX A/C BOLT	2	XXXX		FBA4-17A
15	AN5-21A HEX A/C BOLT	2	XXXX		FBA5-21A
14	BASE BAR HAND GRIPS	2	XXXX		PMH-008B
13	EXTRUSION END BOOT	2	XXXX		PMH-048
12	FIB-0809 SDU FLANGED BEARING	4	XXXX		XXXX
11	LOWER SIDE RIGGING	4	XXXX		YOD-045
10	LOWER FRONT RIGGING	2	XXXX		YOD-047
9	LOWER REAR RIGGING	2	XXXX		YOD-046
8	SPARE	X	XXXX		XXXX
7	C FRAME SIDE TOP KNUCKLE	2	XXXX		ZKN-133
6	C FRAME BASE TUBE KNUCKLE	2	XXXX		ZKN-126
5	UPRIGHT ROTATOR BEARING	2	XXXX		ZNP-132
4	C FRAME SIDE LOWER KNUCKLE	2	XXXX		ZKN-132
3	CONTROL FRAME BASE TUBE	1	XXXX		YQC-042
2	(SPARE)	X	XXXX		XXXX
1	CONTROL FRAME UPRIGHT (L/R)	2	XXXX		YQD-041

MULTI CONTROL FRAME

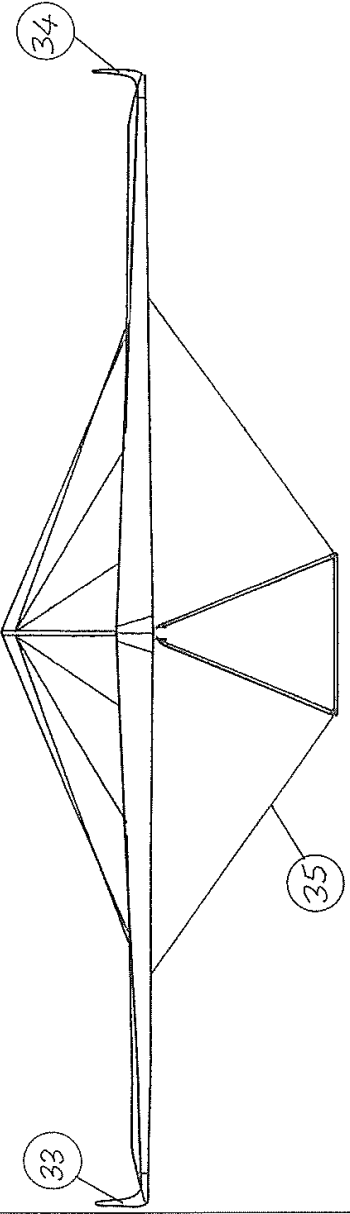
UNIT 9, CHAWFORD STREET
 HEDDLETON, LEICESTERSHIRE
 LE15 8SH
P&M Aviation
 TEL: (+44)(0) 1700 855 134
 FAX: (+44)(0) 1700 831 591
 flyingparts@pandavion.com

DIM IN mm GEN TOL: NONE
 UNLESS OTHERWISE SPECIFIED

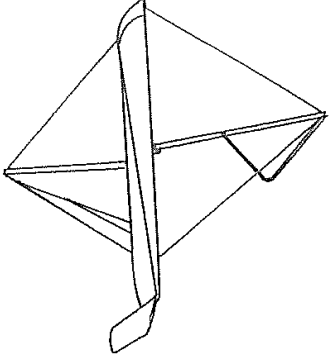
Scale: 1:2
 Drawing No. YQD-040
 Substituted for:
 Replaced by:

Rev	Description	Date	Drawn	Apprv
1		21/07/05		

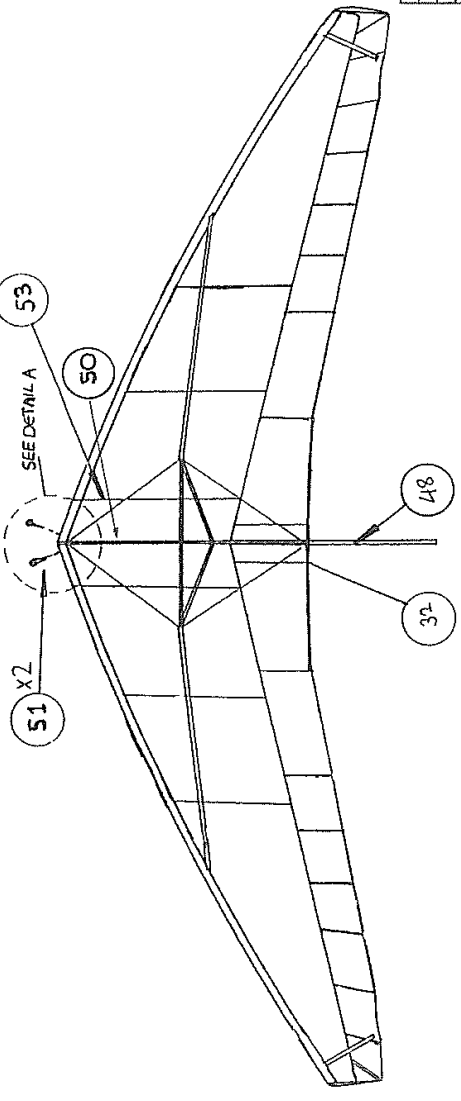
FRONT ELEVATION



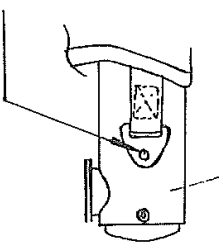
SIDE ELEVATION



UNDERSIDE ELEVATION



DETAIL A



L/E ASSEMBLY

PULL TANG FORWARD ENSURING THE WEBBING IS JUST TIGHT AND IN LINE WITH THE LEADING EDGE TUBE. MOVE TANG DIRECTLY REARWARD 15mm FROM THIS POSITION ALONG THE LEADING EDGE TUBE. MARK HOLE THROUGH TANG ONTO TUBE. DRILL L/E DIA 4mm THROUGH ONE ITEM 42 TO ATTACH TANG TO LEADING EDGE. REPEAT FOR OTHER SIDE.

No.	Description	Qty	Material	Weight	Part No.
1	XXX	1	XXXX	XXXX	XXXX

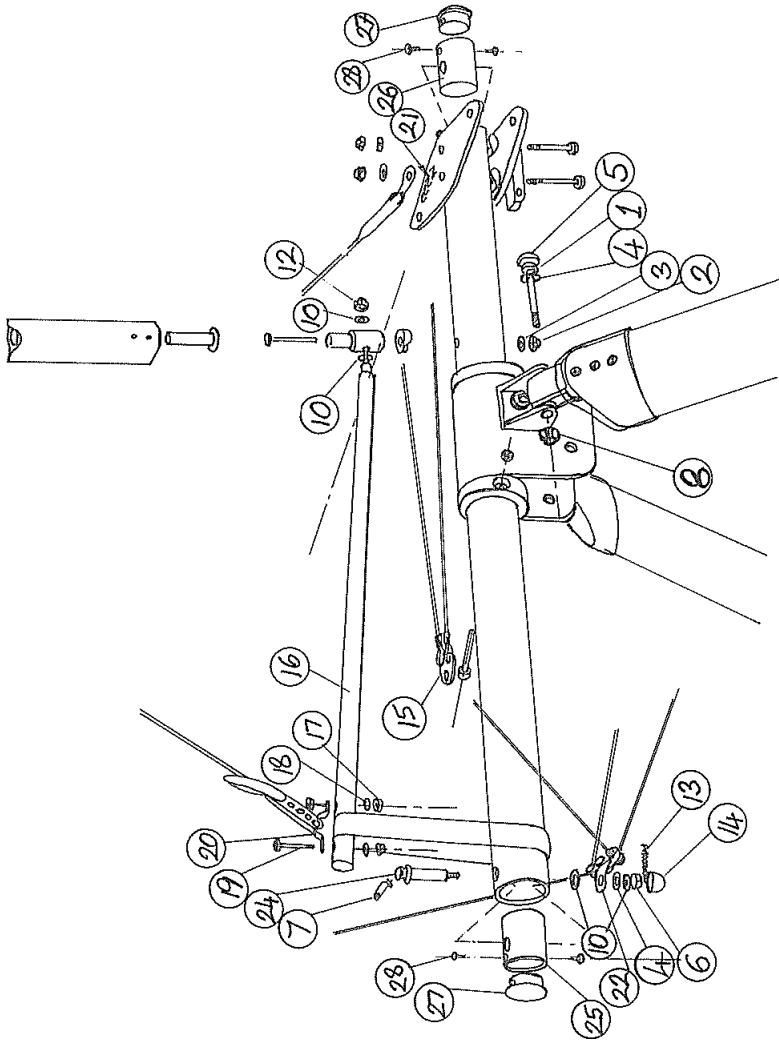
WING FINAL ASSY
GT 450 (MULTI)

UNIT 81, GRANFORD STREET
ROCHINGHAM
SOUTH AUCKLAND
TEL: (+44) (0) 1708 655 134
FAX: (+44) (0) 1708 631 591
+33yngp@pavation.co.uk

Scale: NTS
Drawing No. YQD - 050
Jig No: NONE

GEN TOL: NONE
UNLESS OTHERWISE SPECIFIED

SHEET 1 OF 4



NOTE: ENSURE RESTRAINT STUD IS FULLY LOCATED THROUGH KEEL AND SAFETY PIN HOLE IS AT 90 DEG TO KEEL BEFORE FASTENING WITH ITEM 31 AND APPLYING WING TENSION.

SHEET 2 OF 4

No.	Description	Qty	Material	Weight	Part No.
41	XXX	1	XXX	XXX	XXX
40	XXX	1	XXX	XXX	XXX
39	XXX	1	XXX	XXX	XXX
38	XXX	1	XXX	XXX	XXX
37	XXX	1	XXX	XXX	XXX
36	XXX	1	XXX	XXX	XXX
35	XXX	1	XXX	XXX	XXX
34	LH TIP FIN	1	XXX	XXX	YWD-081
33	RH TIP FIN	1	XXX	XXX	YWD-082
32	MULTI BATTEN PLAN ASSEMBLY	1	XXX	XXX	YWD-71000
31	1/4" NYLOCK 'T' TYPE NUT	1	XXX	XXX	FWA-12
30	1/4" X 3/16 WASHER	1	XXX	XXX	FWA-12
29	SKIFFY WASHER 10mm	3	XXX	XXX	PHC-SB10
28	M8X10 PLASTIC PAH HEAD SCREW	4	XXX	XXX	FFSS-10
27	1 5/8" BLACK END PLUG	2	XXX	XXX	PEP13-001
26	KEEL RIGGING STRUT ADAPTOR (F)	1	XXX	XXX	YQC-018A
25	KEEL RESTRAINT STUD	1	XXX	XXX	YQC-018B
24	KEEL POCKET LOAD STRAP	1	XXX	XXX	YQC-066
23	LOWER REAR WIRE ASSEMBLY	1	XXX	XXX	YQC-046
22	LOCATION OF SERIAL NUMBER	1	XXX	XXX	XXX
21	S. STEEL DECK EYE	1	XXX	XXX	N/A
20	M8X40 HEX HT BOLT	2	XXX	XXX	RH-1
19	M8X40 HEX HT BOLT	2	XXX	XXX	FBM6-40
18	M8 NYLOCK 'T' TYPE NUT	2	XXX	XXX	FWM8-HT
17	M8 NYLOCK 'T' TYPE NUT	2	XXX	XXX	YWD-070
16	FIN TUBE ASSEMBLY	1	XXX	XXX	YWD-052
15	RESTRAINT CABLE ASSEMBLY	1	XXX	XXX	PHC-R506
14	SKIFFY CAP 8 RH <i>Raised</i>	1	XXX	XXX	FFSP-002
13	1/16 SPLIT PIN	1	XXX	XXX	FWM8-HT
12	M6 NYLOCK 'T' TYPE NUT	2	XXX	XXX	YWD-054
11	UPPER RIGGING REAR LINK WIRE	1	XXX	XXX	FWM8-HT
10	1/4 M/STEEL WASHER T4LP	5	XXX	XXX	FWM8-HT
9	KING POST ASSEMBLY	1	XXX	XXX	YWD-051
8	<i>SAFETY CLIP - NUT</i>	2	XXX	XXX	008-135
7	<i>SAFETY CLIP - NUT</i>	1	XXX	XXX	008-135
6	<i>AVIATION CASTLE - NUT</i>	1	XXX	XXX	008-222
5	SKIFFY CAP 8mm	2	XXX	XXX	PHC-SB8
4	SKIFFY WASHER 8mm	2	XXX	XXX	PHC-SB8
3	5/16 TBL3 WASHER	2	XXX	XXX	FWM8-T3
2	M8 NYLOCK 'T' TYPE NUT	1	XXX	XXX	FWM8-HT
1	<i>M8-20A</i> HEX HT BOLT	2	XXX	XXX	008-222

WING FINAL ASSY
GT 450 (MULTI)

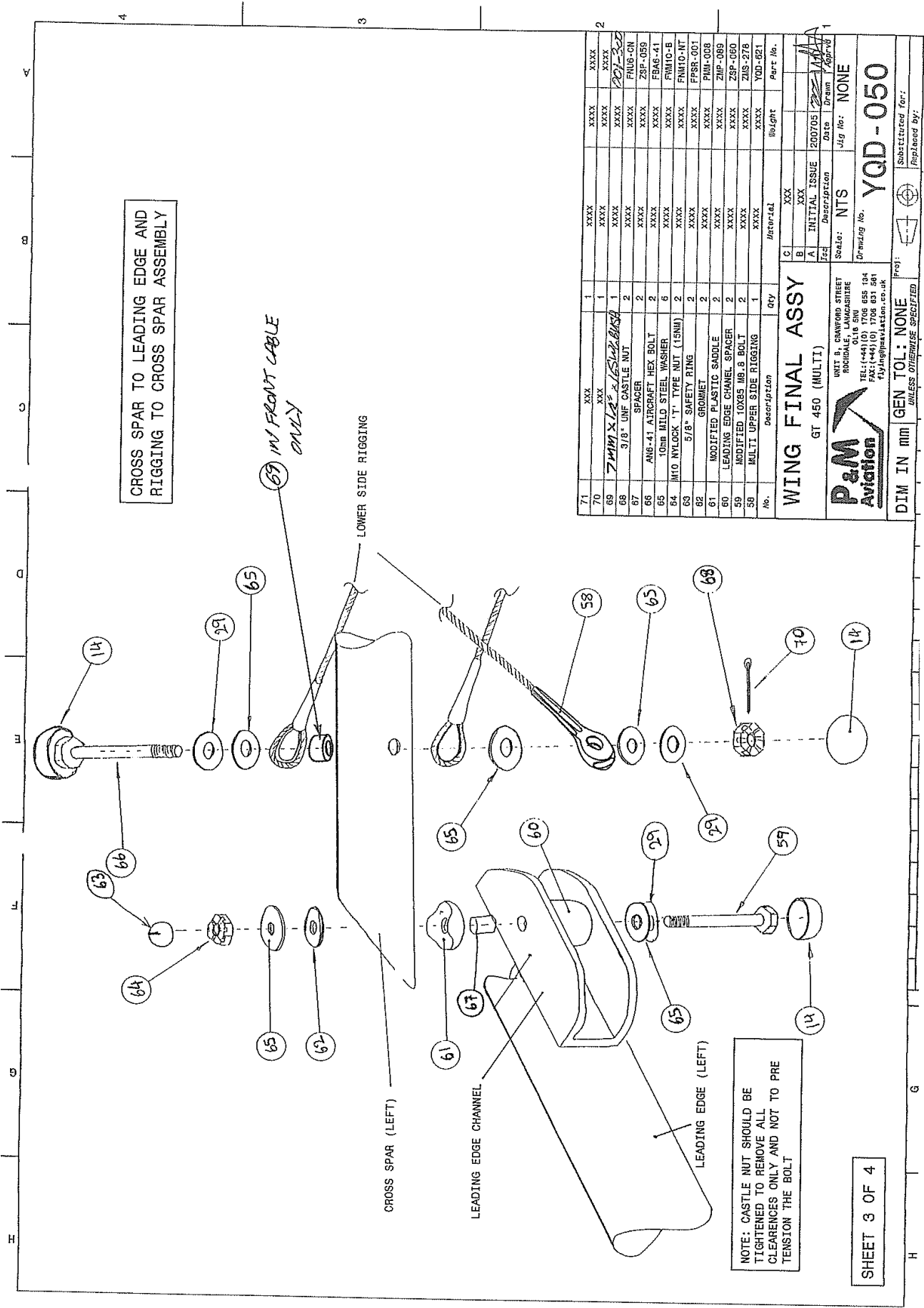


UNIT 8, CRAWFORD STREET
ROCHDALE, LAMARSHIRE
OL16 6NU
TEL: (+44) (0) 1708 855 134
FAX: (+44) (0) 1708 855 131
fly@pandmaviation.co.uk

Proj: GEN TOL: NONE
UNLESS OTHERWISE SPECIFIED

Scale: NTS
Drawing No. YQD-050
Date 200705
Drawn
Apprvd

Substituted for:
Replaced by:



No.	Description	Qty	Material	Weight	Part No.
71	XXX	1	XXX	XXX	XXX
70	XXX	1	XXX	XXX	XXX
69	7MM X 1.25 X 1.5mm CASTLE NUT	1	XXX	XXX	201-30
68	3/8" UNF CASTLE NUT	2	XXX	XXX	FNUB-CN
67	SPACER	2	XXX	XXX	ZSP-059
66	ANG-41 AIRCRAFT HEX BOLT	2	XXX	XXX	FBAG-41
65	10mm MILD STEEL WASHER	6	XXX	XXX	FMI10-B
64	M10 NYLOCK T-TYPE NUT (15MM)	2	XXX	XXX	FPSR-001
63	5/8" SAFETY RING	2	XXX	XXX	PNU-008
62	GROMMET	2	XXX	XXX	ZNP-089
61	MODIFIED PLASTIC SADDLE	2	XXX	XXX	ZSP-060
60	LEADING EDGE CHANNEL SPACER	2	XXX	XXX	ZIS-278
59	MODIFIED 10x85 M8 BOLT	2	XXX	XXX	YQD-821
58	MULTI UPPER SIDE RIGGING	1	XXX	XXX	

WING FINAL ASSY
GT 450 (MULTI)

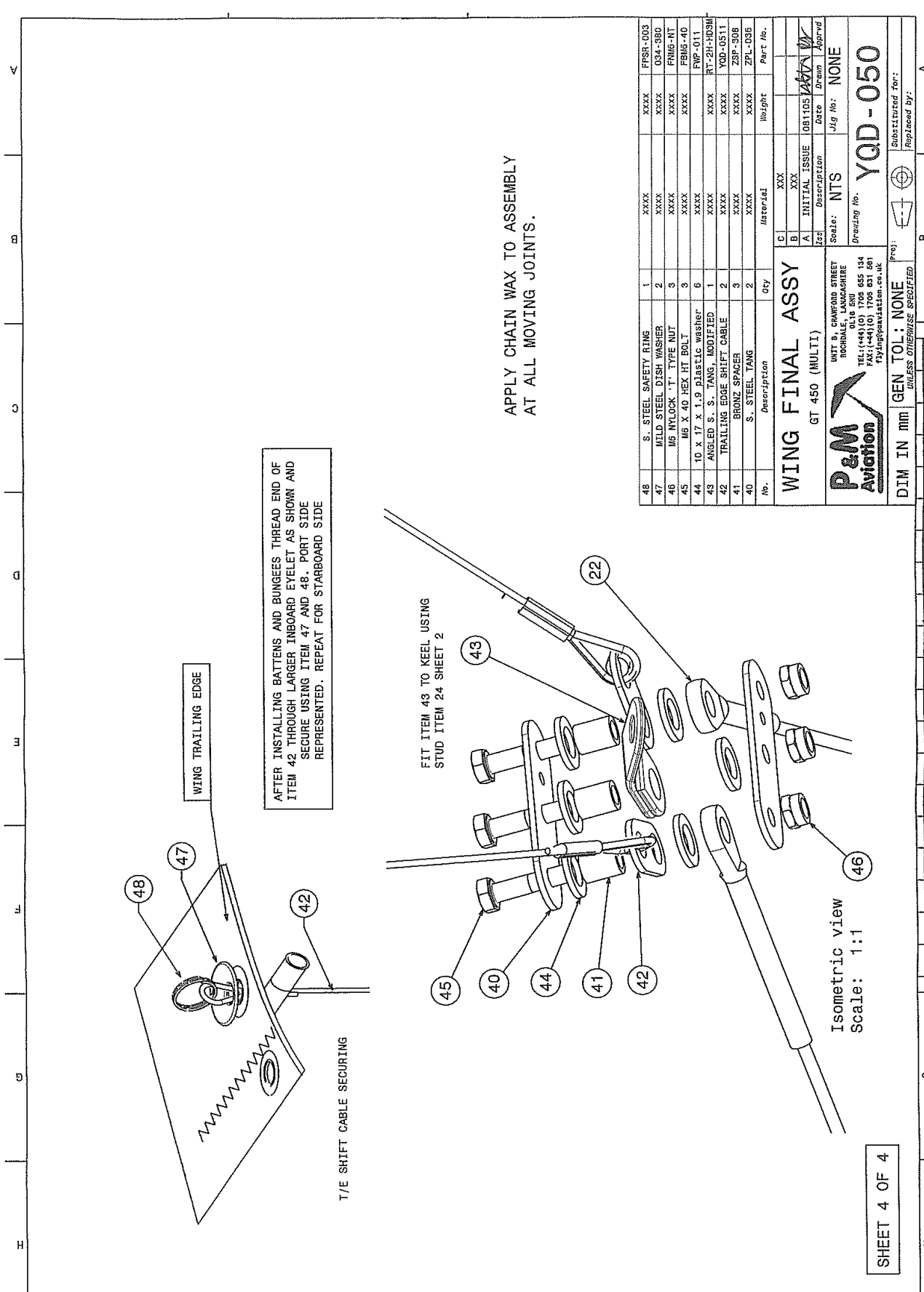
P&M Aviation
UNIT 8, CHANFORD STREET
ROUGHAM, Lincs, HUMBERSHIRE
TEL: (+44) (0) 1706 635 134
FAX: (+44) (0) 1706 631 581
flyings@pandmaviation.co.uk

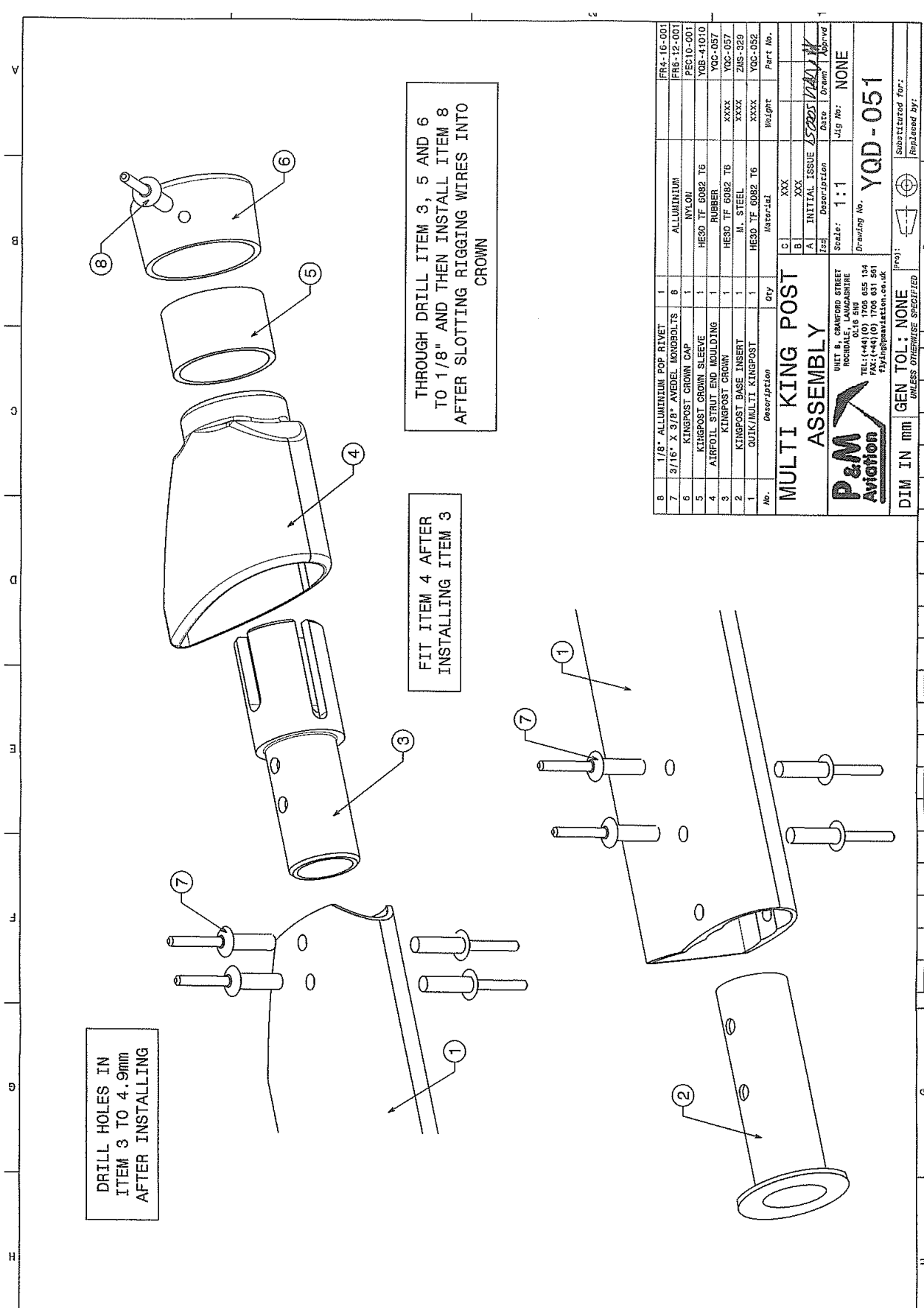
INITIAL ISSUE 1200705
Description Date Drawn Approved
Scale: NTS
Jig No: NONE
Drawing No. **YQD-050**

DIM IN mm GEN TOL: NONE
UNLESS OTHERWISE SPECIFIED

Substituted for:
Replaced by:

SHEET 3 OF 4



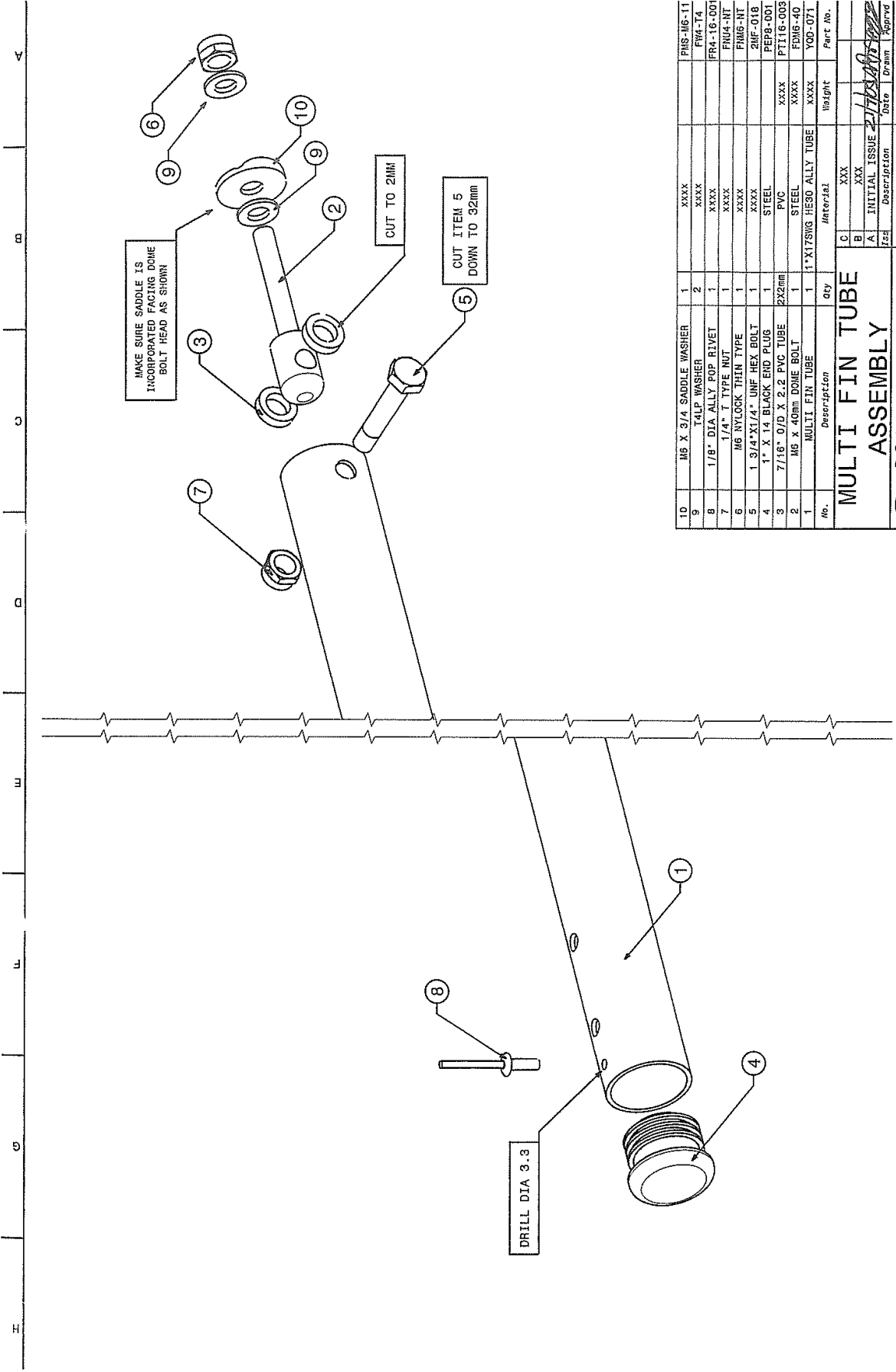


DRILL HOLES IN
ITEM 3 TO 4.9mm
AFTER INSTALLING

FIT ITEM 4 AFTER
INSTALLING ITEM 3

THROUGH DRILL ITEM 3, 5 AND 6
TO 1/8" AND THEN INSTALL ITEM 8
AFTER SLOTTING RIGGING WIRES INTO
CROWN

8	1/8" ALUMINIUM POP RIVET	1	FR4-16-001
7	3/16" X 3/8" AVEDEL KOROBOLTS	8	FR6-12-001
6	KINGPOST CROWN CAP	1	PEG10-001
5	KINGPOST CROWN SLEEVE	1	YGB-1010
4	AIRFOIL STENT END MouldING	1	YGB-057
3	KINGPOST CROWN	1	YGB-057
2	KINGPOST BASE INSERT	1	XXXX
1	QUIK/MULTI KINGPOST	1	XXXX
			XXXX
No.	Description	Qty	Material
			Weight
			Part No.
C	XXX		
B	XXX		
A	INITIAL ISSUE	Date	Drawn
			Approved
	Scale: 1:1	Jig No:	NONE
	Drawing No.	YQD-051	
UNIT 8, CRANFORD STREET ROCHDALE, LANCASHIRE UK TEL:(+44)(0) 1705 655 134 FAX:(+44)(0) 1705 031 561 flying@pandmaviation.co.uk			
DIM IN mm		GEN TOL: NONE	
UNLESS OTHERWISE SPECIFIED			
Substituted for:		Replaced by:	



No.	Description	Qty	Material	Weight	Part No.
10	M6 X 3/4 SADDLE WASHER	1	XXXX		FMS-16-11
9	T4LP WASHER	2	XXXX		FW4-T4
8	1/8" DIA ALLY POP RIVET	1	XXXX		FR4-16-001
7	1/4" T TYPE NUT	1	XXXX		FN4-N1
6	M6 NYLOCK THIN TYPE	1	XXXX		FN4-N1
5	1 3/4" X 1/4" UNF HEX BOLT	1	XXXX		2HF-018
4	1" X 1/4 BLACK END PLUG	1	STEEL		REP3-001
3	7/16" O/D X 2.2 PVC TUBE	2X2mm	PVC		PT16-003
2	M6 x 40mm DOME BOLT	1	STEEL	XXXX	FM6-40
1	MULTI FIN TUBE	1	1" X 175MG HE30 ALLY TUBE	XXXX	YQD-071

MULTI FIN TUBE ASSEMBLY

UNIT 8, ORANGEWOOD STREET
ROCHDALE, LANCASHIRE
OL16 6HU
TEL: (+44) (0) 1706 885 134
FAX: (+44) (0) 1706 885 135
13518@pandaviation.co.uk

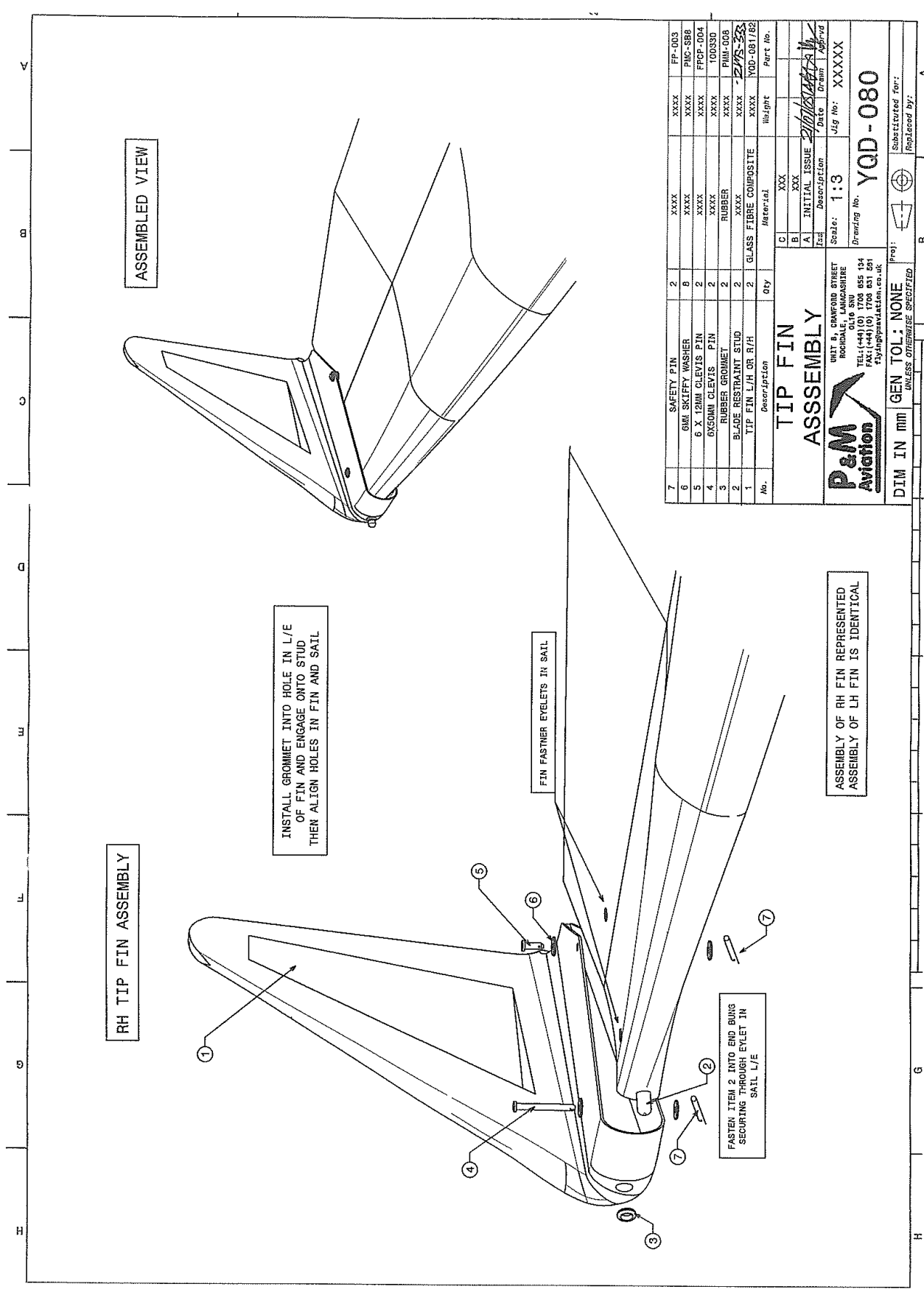
P&M Aviation

C	XXX	Weight	
B	XXX		
A	INITIAL ISSUE	Date	Drawn
ZSS	Description	Date	Drawn

Scale: 1:1

Proj: YQD-070

Substituted for:



RH TIP FIN ASSEMBLY

ASSEMBLED VIEW

INSTALL GROMMET INTO HOLE IN L/E OF FIN AND ENGAGE ONTO STUD THEN ALIGN HOLES IN FIN AND SAIL

FASTEN ITEM 2 INTO END BUNG SECURING THROUGH EYELET IN SAIL L/E

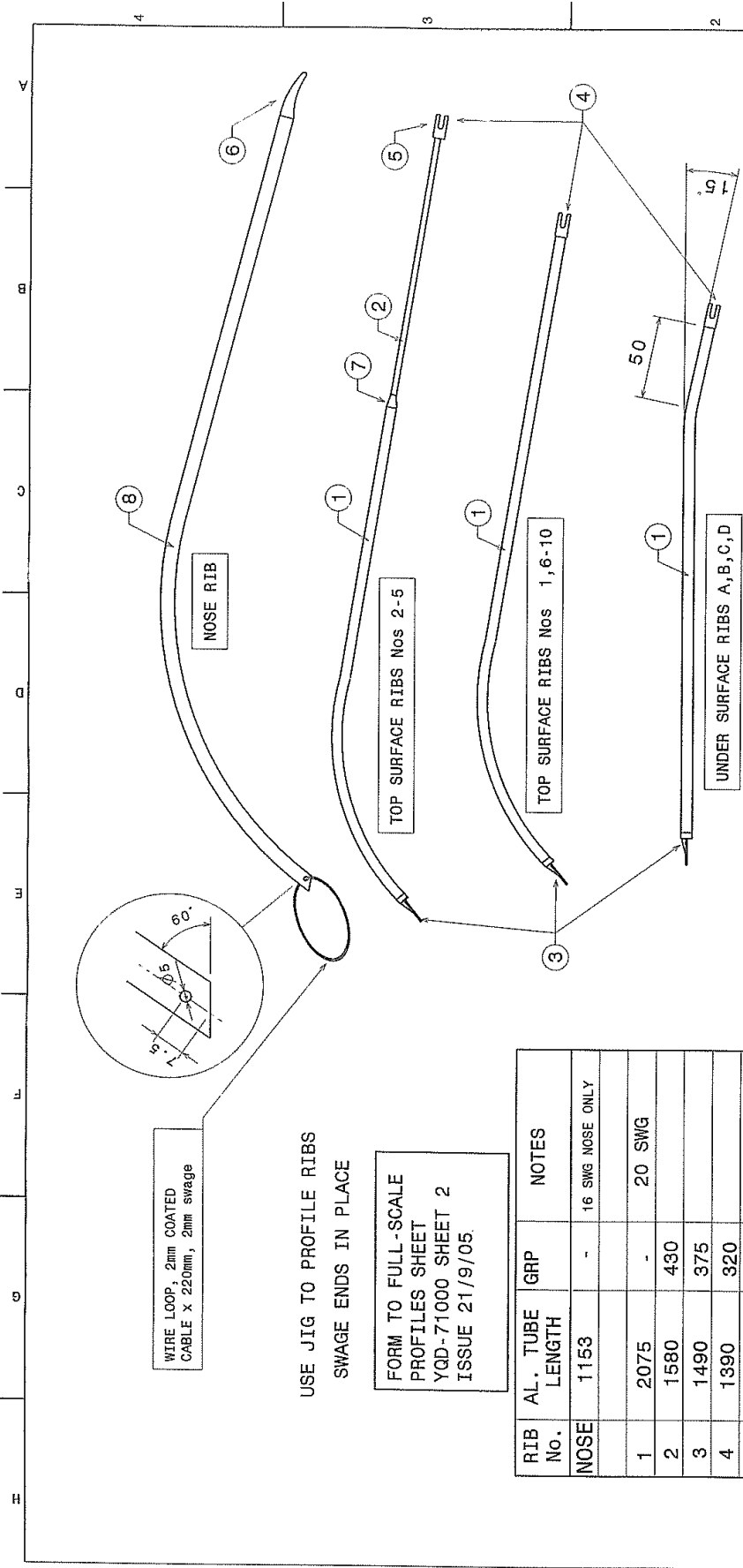
FIN FASTNER EYELETS IN SAIL

ASSEMBLY OF RH FIN REPRESENTED
ASSEMBLY OF LH FIN IS IDENTICAL

No.	Description	Qty	Material	Weight	Part No.
7	SAFETY PIN	2	XXXX	XXXX	FP-003
6	GMI SKIFFY WASHER	6	XXXX	XXXX	PIG-SB8
5	6 X 12MM CLEVIS PIN	2	XXXX	XXXX	FFCP-004
4	6X50MM CLEVIS PIN	2	XXXX	XXXX	100930
3	RUBBER GROMMET	2	RUBBER	XXXX	PIH-008
2	BLADE RESTRAINT STUD	2	XXXX	XXXX	275-333
1	TIP FIN L/H OR R/H	2	GLASS FIBRE COMPOSITE	XXXX	YQD-081782

TIP FIN ASSEMBLY	
C	XXX
B	XXX
A	INITIAL ISSUE
Face	Description
Scale:	1:3
Jig No:	XXXXXX
Draining No.	YQD-080

UNIT 8, CHAPFORD STREET HODDINGHURST G16 8JH TEL: (+44) (0) 1708 855 134 FAX: (+44) (0) 1708 831 891 p3@p3aviation.co.uk	
DIM IN mm	GEN TOL: NONE
UNLESS OTHERWISE SPECIFIED	
Substituted for:	Replaced by:



WIRE LOOP, 2mm COATED
CABLE x 220mm, 2mm swage

USE JIG TO PROFILE RIBS
SWAGE ENDS IN PLACE

FORM TO FULL-SCALE
PROFILES SHEET
YQD-71000 SHEET 2
ISSUE 21/9/05.

RIB No.	AL. TUBE LENGTH	GRP	NOTES
NOSE	1153	-	16 SWG NOSE ONLY
1	2075	-	20 SWG
2	1580	430	
3	1490	375	
4	1390	320	
5	1300	280	
6	1390	-	
7	1240	-	
8	1110	-	
9	950	-	
10	1000	-	
A	1457		
B	1304	U/SURFACE	
C	1132	BATTENS	
D	900		

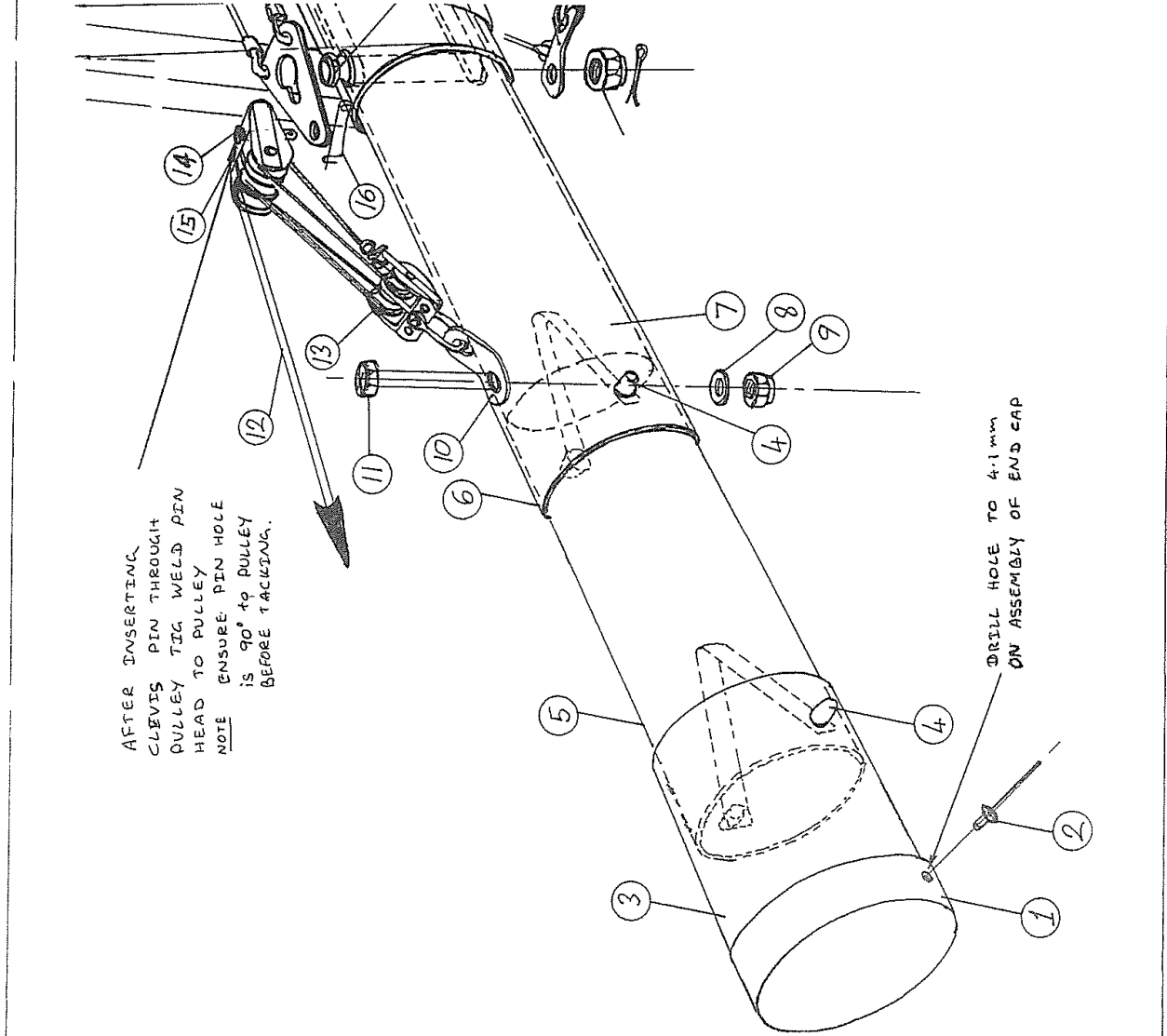
No.	Description	Qty	Material	Height	Part No.
8	NOSE RIB	1	1/2" 16SWG 6082-T6 EN		NY-6-4-3
7	RIB REDUCER	8			PMR4-RED
6	NOSE RIB BEAR	1			PMR4-CW
5	GRP END	8			PMR4-FR/G
4	REAR RIB END	20			PMR4-CW
3	FRONT RIB END	28			PMR4-CW
2	GRP ROD	-			PCR-001
1	RIB	-	1/2" 20SWG 6082-T6 EN		ATUD-4-1

Revision	Initial Issue	Date	Drawn	Approved
B	1	5 rib dia	21/11/05	
A	INITIAL ISSUE	21/07/05		

MULTI WING RIBS P&M AVIATION GT 450		UNIT 8, CHANFORD STREET ROCHEDALE, LANCASHIRE OL16 5NP TEL: (1441) 01 1700 631 501 FAX: (1441) 01 1700 631 501 flying@pandmaviation.co.uk	
P&M Aviation		Scale: NTS Drawing No. YQD-71000 Jig No. BATTEN JIG	

DIM IN mm GEN TOL: 2.5mm
UNLESS OTHERWISE SPECIFIED

16	SAFETY PIN	1	FP-003
15	TRIPPLE PULLEY BLOCK	1	RP-8
14	4.75mmX15.8mm CLEVIS PIN	1	FPCP-005
13	TWIN PULLEY BLOCK	1	RP-9
12	3mm BLUE CHORD (6METRES)	6m	VNR-BL3
11	M6X60mm HEX HT BOLT	1	FBM6-60
10	5/16 HOLE LIGHT DUTY TANG	1	RT-185
9	M6 NYLOCK NUT 'T' TYPE	1	FNMG-NT
8	1/4 T3 L.P. M/5 WASHER	1	FW4-T3
7	RIGGING TOOL SLT TUBE-INNER	1	YQC-014
6	RIGGING TOOL SLT TUBE-OUTER	1	YQC-013
5	RIGGING TOOL EXT TUBE-INNER	1	YQC-015
4	BUTTON PIN	2	FPBP-001
3	RIGGING TOOL EXT TUBE-OUTER	1	YQC-016
2	4mmX8mm ALLY POP RIVET	1	FR4-8-002
1	END CAP (YELLOW)	1	PEC50-001



Drawn	7/10/02	Name	
Checked	7/10/02	Name	
PEGASUS AVIATION			
Drawing/Part No: YQC-017			

Iss.	Description of revision	Date	Approved
QUIK KEEL RIGGING STRUT ASSEMBLY			
DIM. IN mm SCALE: NTS PROJ			
GEN. TOL. +-0.1			